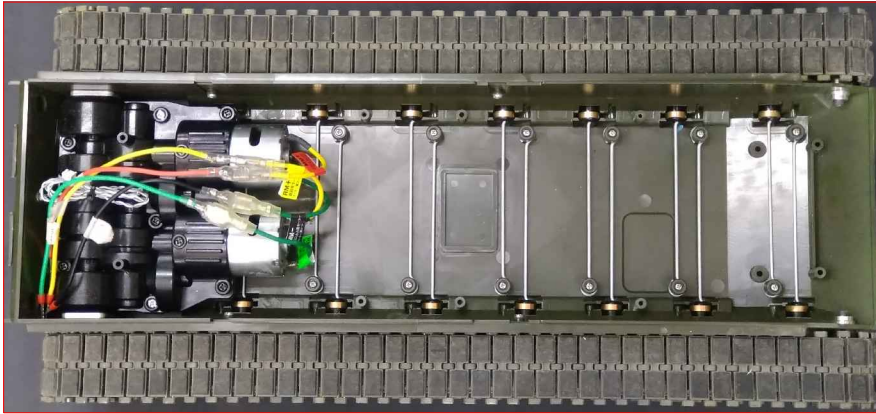


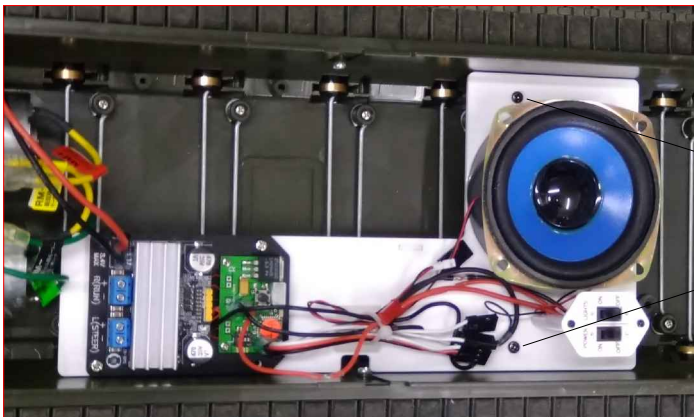
# RC Conversion Kit for Tamiya 1/16 Leopard 2A6 (Airsoft Gun Version) Installation Manual

## 1 Lower hull

Step 1: remove speaker

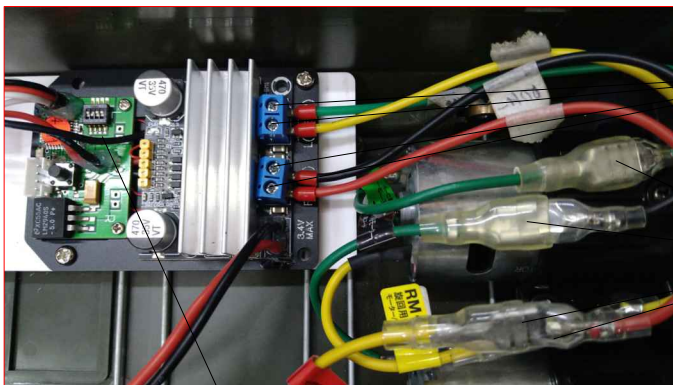


Step 2: install control board



PB3x10 screws

Step 3: Connect motor cables

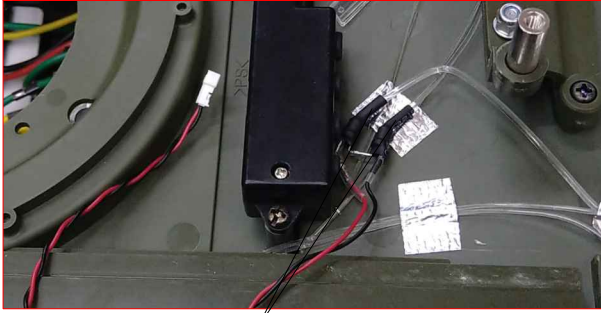


secure cables to  
MTC-2-BT terminals

connect motor cables

! set SW2 off ! for double differential gearbox

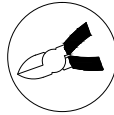
## 2 Head lights



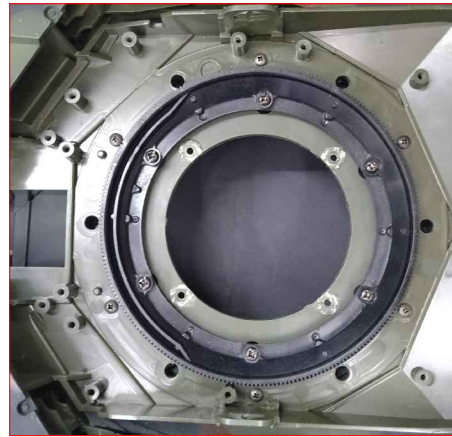
insert headlight optical fibres to LEDs, secure with adhesive tapes

## 3 Turret ring gear

Step 1: remove 4 caps on upper hull



Step 2: build the turret ring gear



Step 3: attach adhesive tape to mirror plate



Step 4: attach mirror plate to ring gear

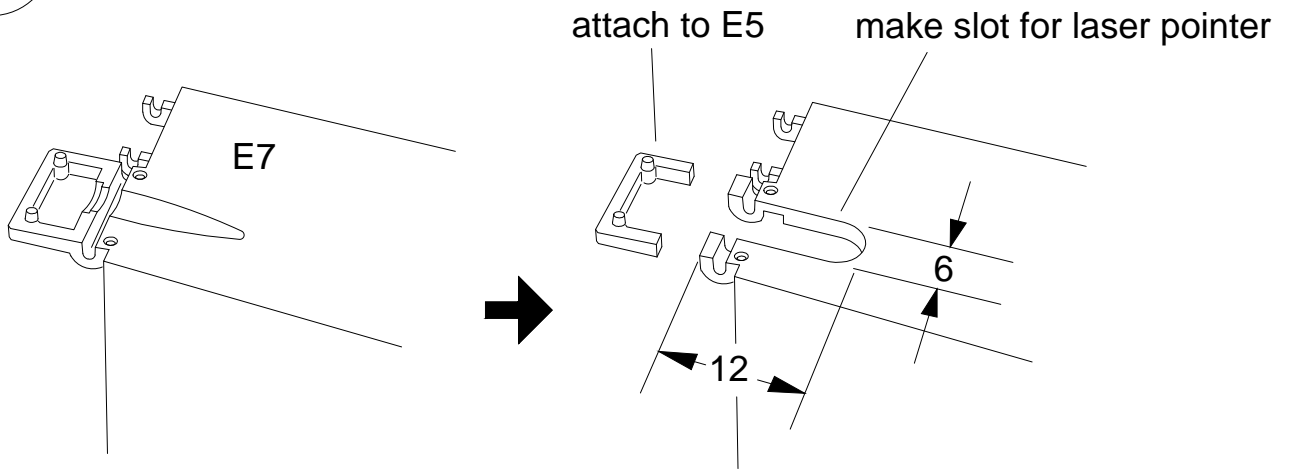


## 4 Machine gun LED

attach machine gun LED



# 5 Laser pointer



**!** do not attach cover parts E1, E5 before you have fine tune laser direction.

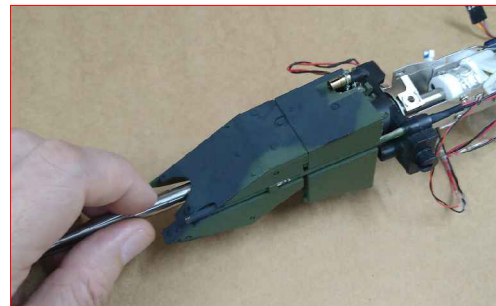
# 6 Main gun



**!** adaptor ring at muzzle end



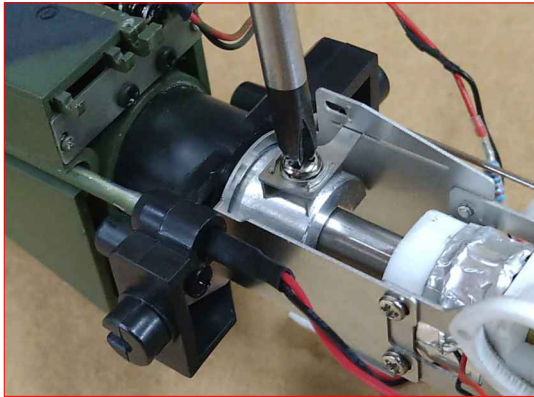
Step 1: attach main gun with PB3x10 screws



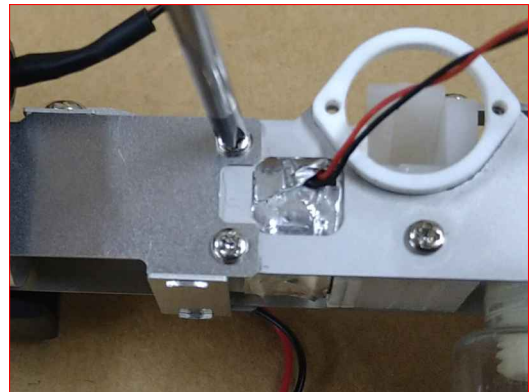
Step 2: insert gun barrel  
no glue is required!

# 6 Main gun

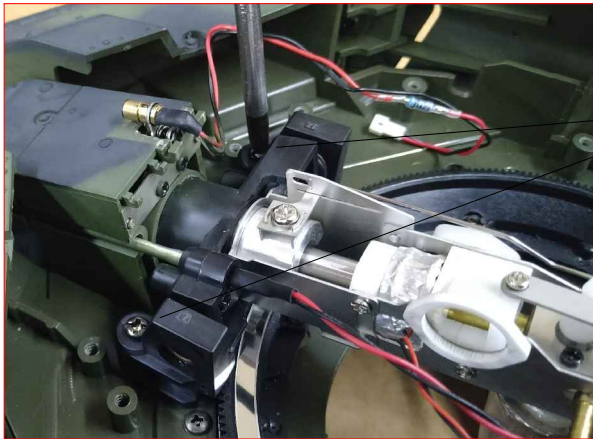
Step 3: insert outer barrel, secure with M3x6 screw



Step 4: the outer barrel must aligned at center and free to move, adjust the 4 mounting screws if necessary

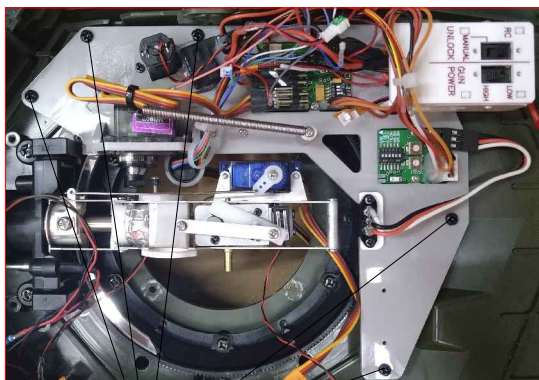


Step 5: install main gun to turret

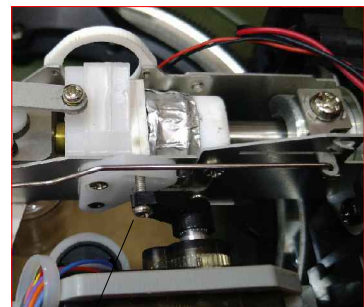


PB3x10 screws

# 7 Turret control board

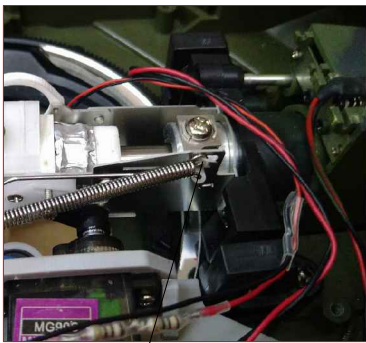


secure control board with PB3x10 screws



! insert servo arm to slot

# 7 Turret control board

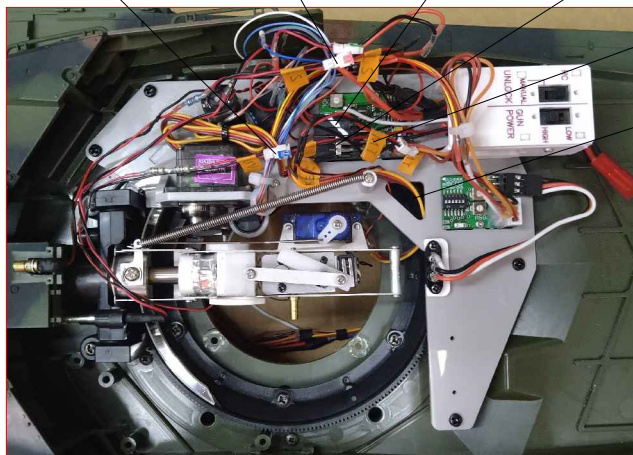


! attach balancing spring



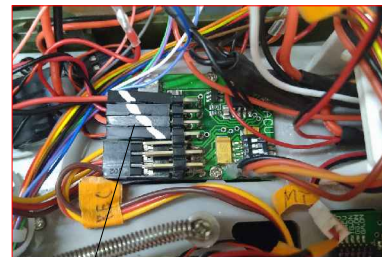
! adjust turret motor position

UV cable    LS cable    MG cable    REC cable    MT cable



connect UV, LS, MG, REC and MT cables

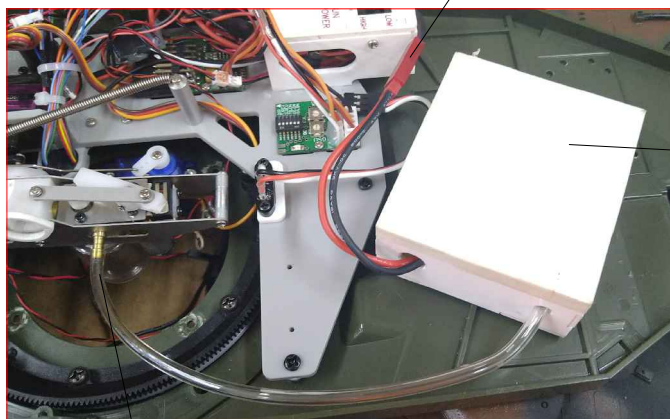
! pass REC and MT cables through this opening



ACU connectors location marks

! after connecting cables, tie them neatly and away from moving parts!

# 8 Air pump



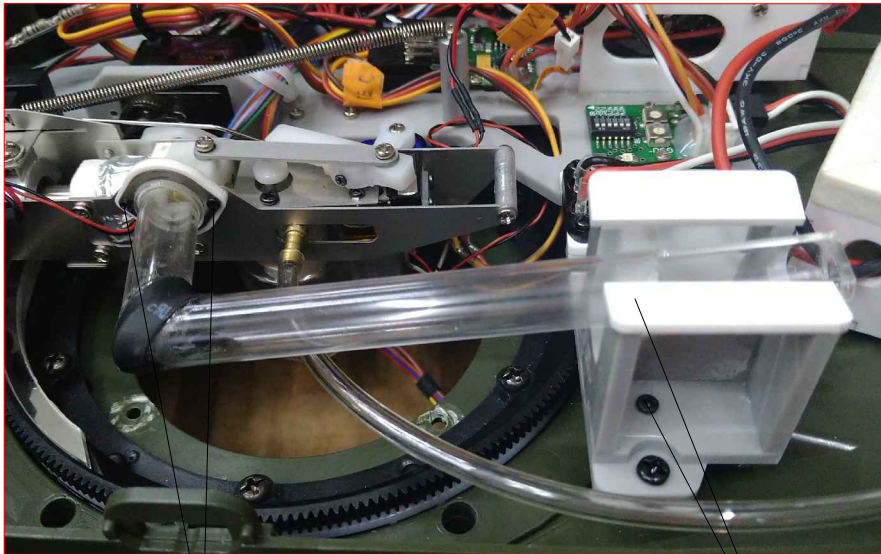
connect power

attach air pump with double side mounting tape

attach air hose

# 9 Bullet tray

attach bullet tray



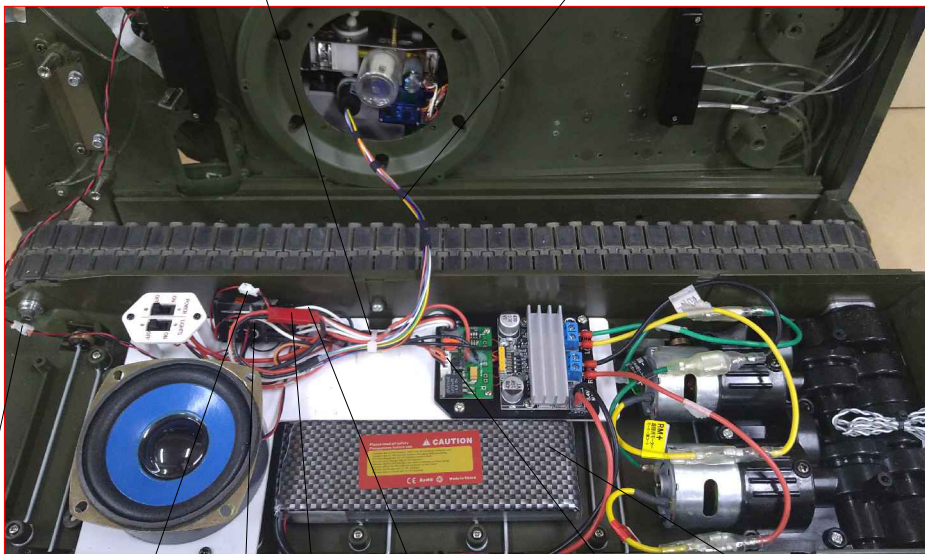
M1.4 x 5 screws

M2 x 6 screws

# 10 Lower hull connections

use cable mount to secure cables,  
tie cable neatly and away from  
moving parts

keep cable length as short as possible



head lights

speaker

7.4V

RC unlock

ACU

2 Cell Lipo battery

2.4G receiver