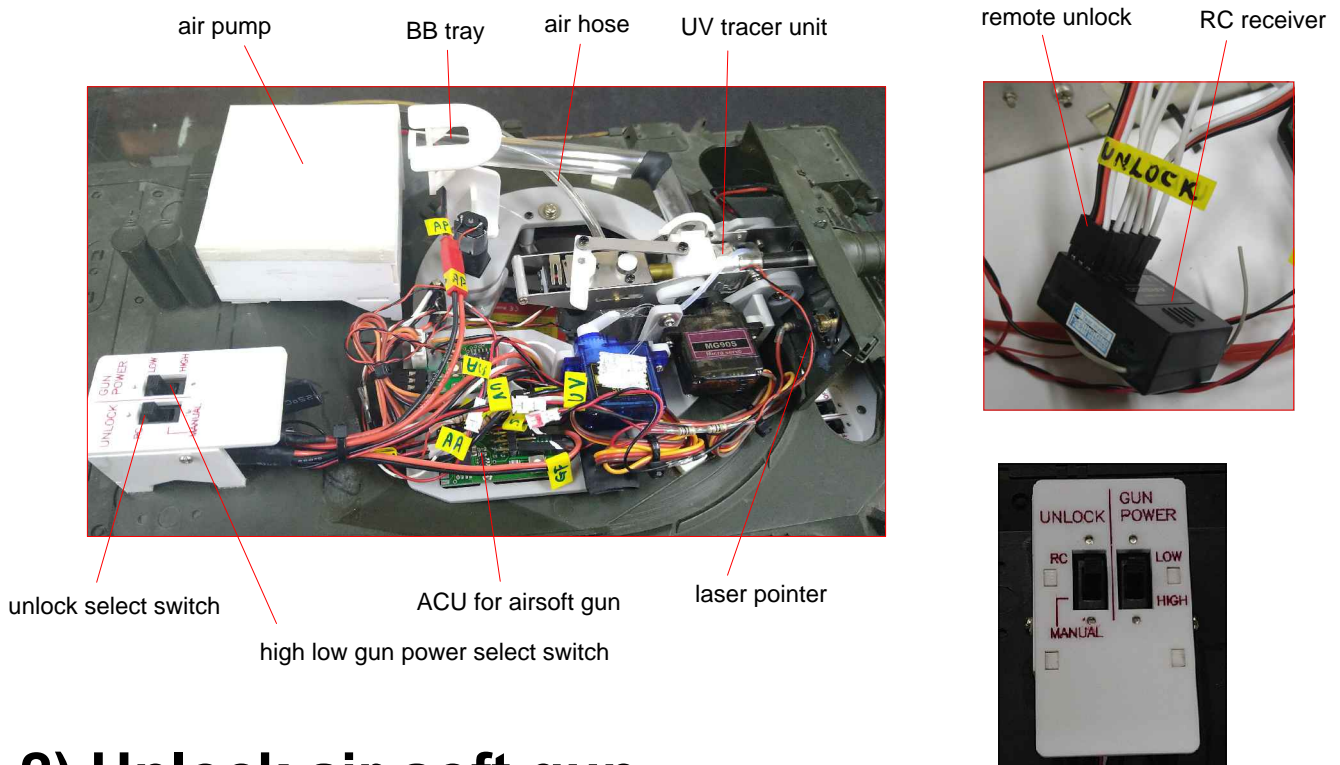


Air-soft Gun for RC Tanks User Manual

Warning!

- The air-soft gun is powerful enough to make serious injury or even blindness!
- It is NOT suitable for children of age under 18.
- Gun may shot unintentionally. Never point the air-soft gun to anybody or look into the gun barrel.
- Bullets may left inside the barrel or bullet tray unattended. Always assume bullets are loaded.
- Wearing protective eye goggles is highly recommended.

1) Air-soft gun parts



2) Unlock air-soft gun

- For safety reason the air-soft gun must be unlocked before shoot.
- After unlock the laser pointer will light up indicating the gun is ready for shoot.
- Unlock can be done by an extra RC channel. Connect the "UNLOCK" cable to the RC receiver, and switch the "UNLOCK" switch to "RC".
- If an extra RC channel in not available, switch the "UNLOCK" switch to "MANUAL". The air-soft air is then unlocked and the laser pointer will light up.

3) Firing of air-soft gun

- You must go through the setup procedures of MTC-2-BT so that you can trigger the air-soft gun. Please read the MTC-2-BT and ACU manual for details.
- Firing is triggered by stick motion. Move the control stick upward quickly will trigger shooting. This is controlled by the ACU (aux. control unit). See the MTC-2-BT and ACU manual for details.
- If the air-soft gun is locked, the air-soft gun will not fire and "beep" warning sound will be heard after fire.

4) Gun power select

- You can select the air-soft gun power by the "GUN POWER" switch.
- In high power mode, the air pump will have a longer on time. The bullets will have higher speed. It is suitable for out door operation.
- In low power mode, the air pump will have a shorter on time. The bullets will have lower speed. It is suitable for in door operation.

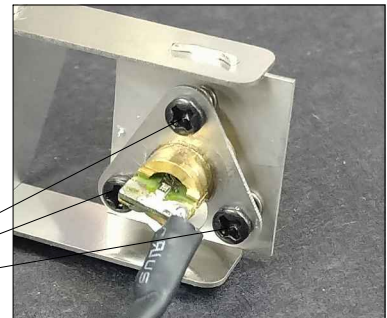
5) UV tracer unit

- The air-soft gun have a build-in UV tracer unit. When UV-tracer bullets is used, the bullet will glow in dark.

6) Laser pointer

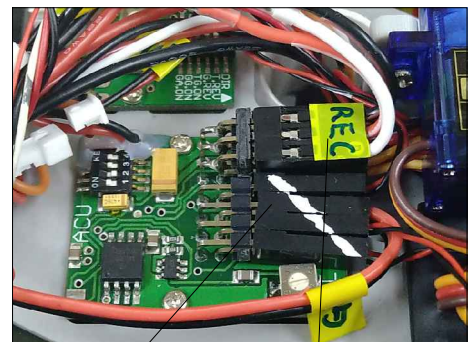
- The laser pointer is secured by spring loaded mounting screws. Adjust the mounting screws to fine tune the laser pointer.

spring loaded mounting screws



7) ACU connections

- The air-soft gun is controlled by a modified ACU.
- An extra REC port is added.
- MG port is used to control gun firing.
- Other ACU functions are the same. Please read MTC-2-BT and ACU manual for details.



MG connector

REC connector