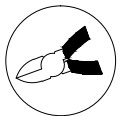


RC Conversion Kit for Trumpeter 1/16 Sd.Kfz 251D Half Track (ITEM NO:00942) User Manual (Version 1.0)

Attention!

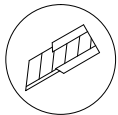
- 1) This kit is designed for experienced model makers. It may be difficult for beginners. Please read this manual thoroughly to see if you have the required skills and tools.
- 2) Cutting tools are used frequently in this kit. Extra care should be taken to avoid injury. Wear hand gloves and eye protection spectacle if necessary.
- 3) Keep room well ventilated when working with cements, paints and organic solvents.
- 4) Visit www.35rctank.com for addition tips and update information.



side cutter



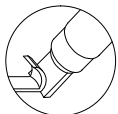
apply cement



modelling knife



do not apply cement



carving knife



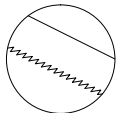
apply instant glue



all purpose glue



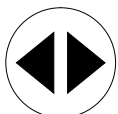
solder



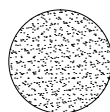
hand saw



apply lubrication oil



both sides

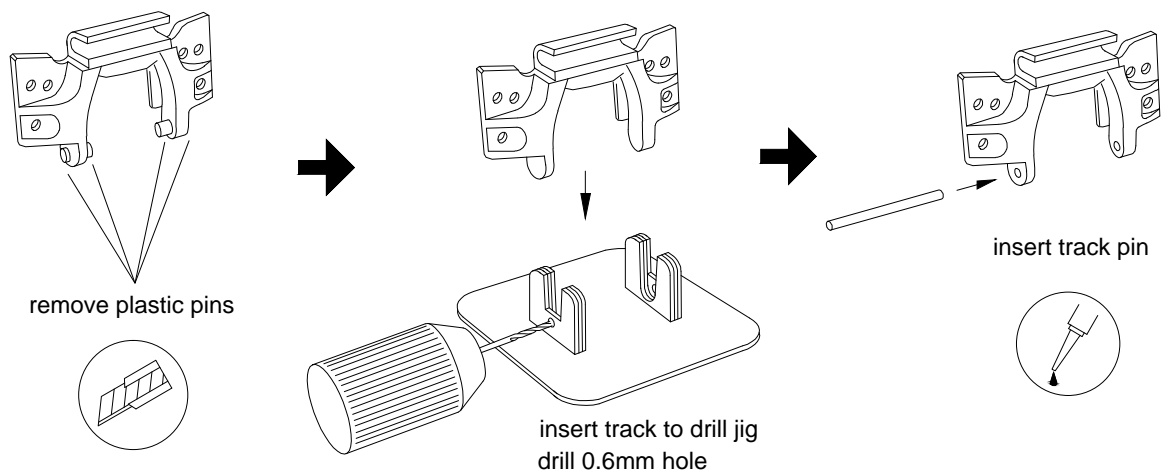


polish with sand paper

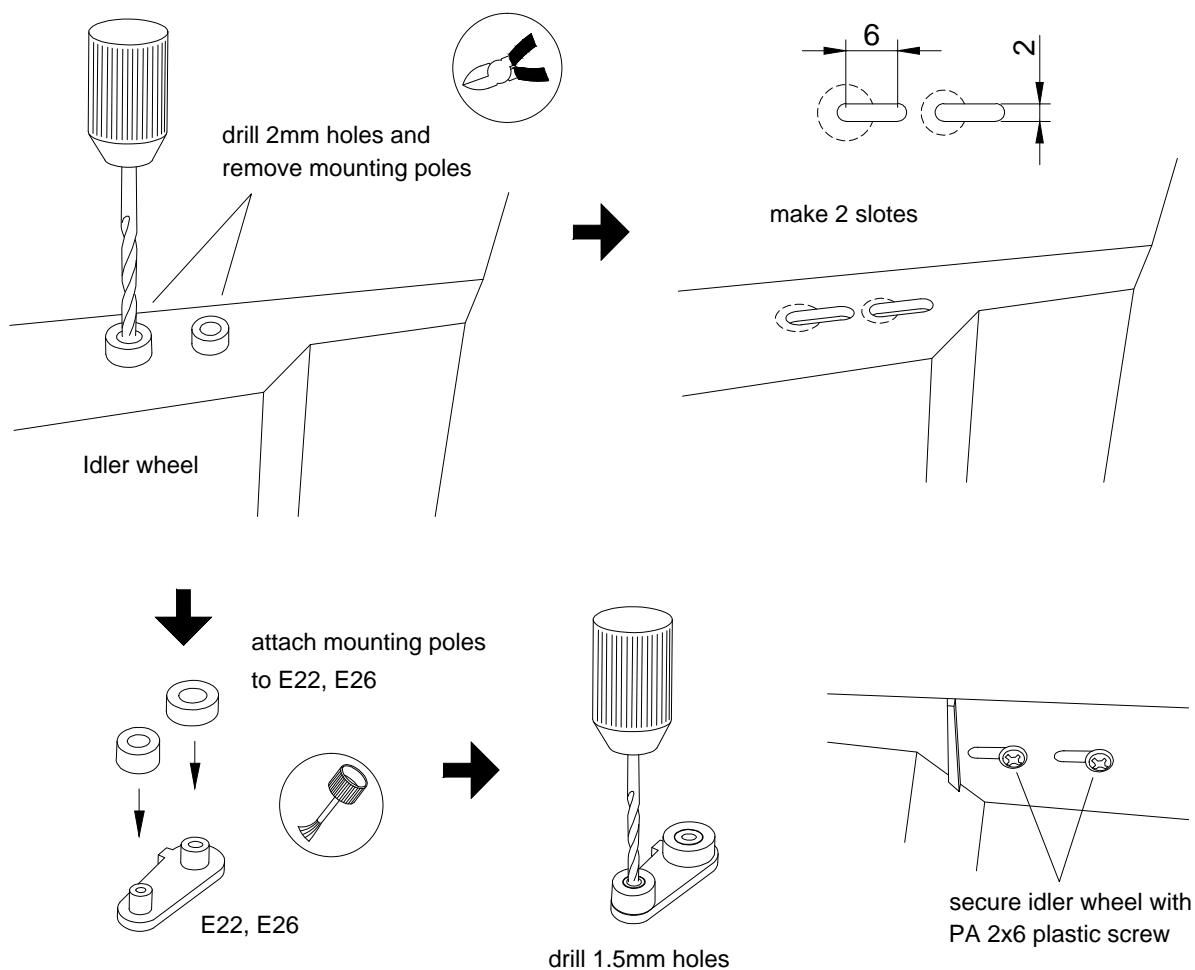


Attention!

1 Tracks

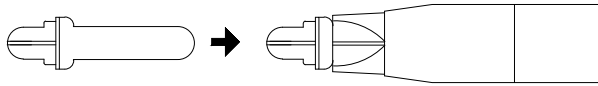


2 Lower hull

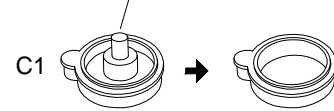


2 Lower hull

insert TOOL-A into knife holder

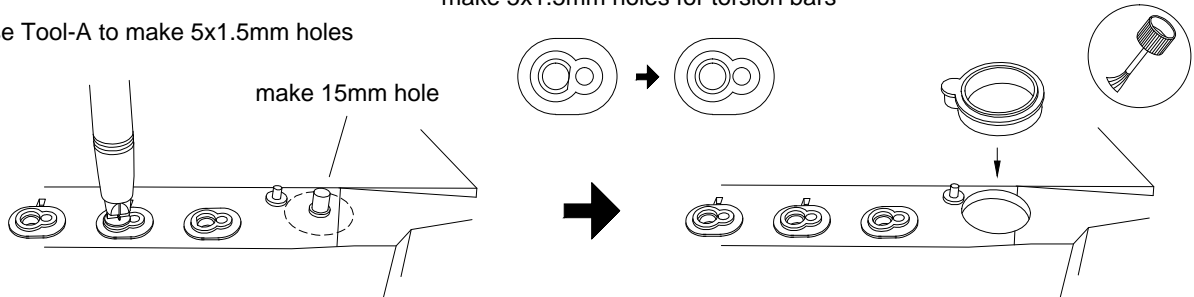


make 15mm hole

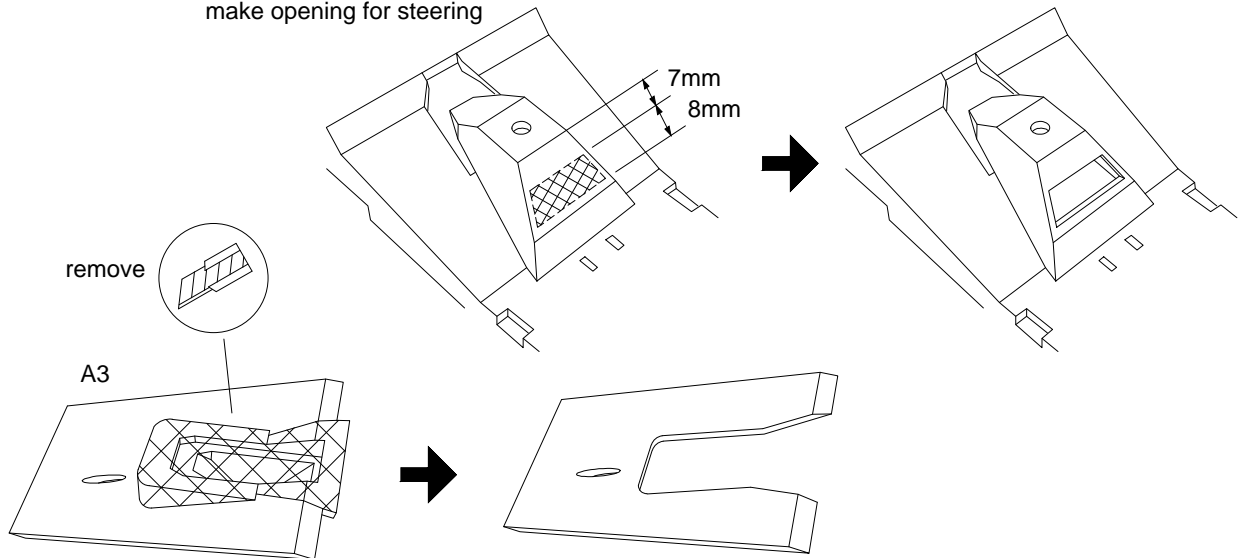


use Tool-A to make 5x1.5mm holes

make 5x1.5mm holes for torsion bars

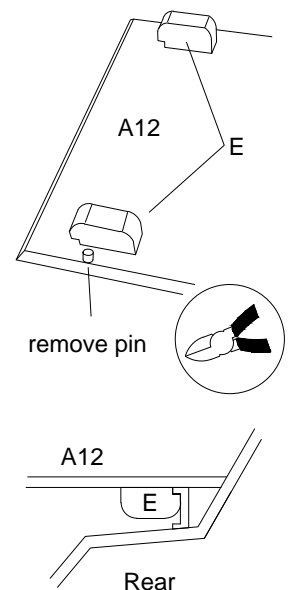
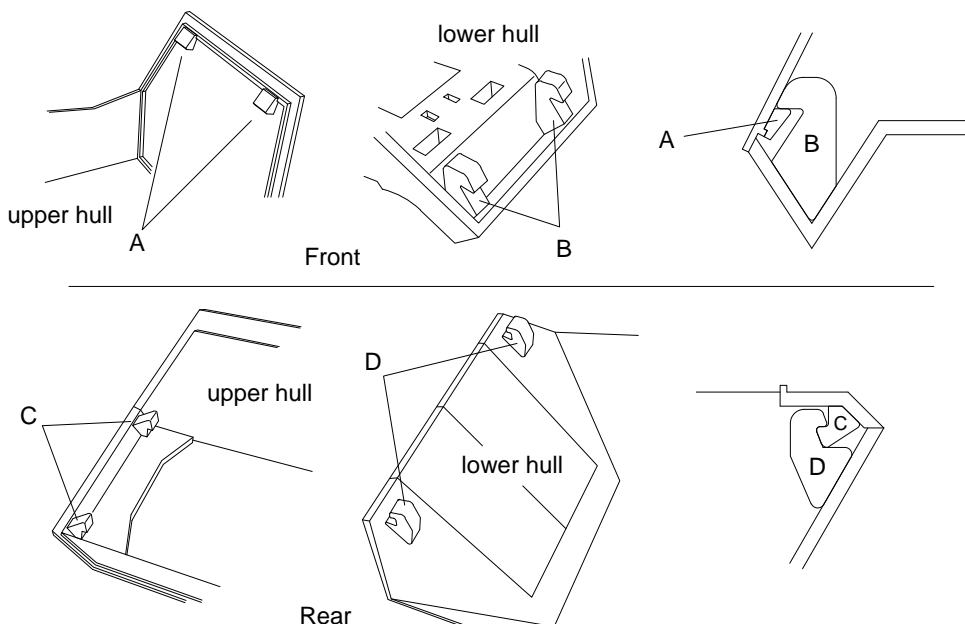


make opening for steering

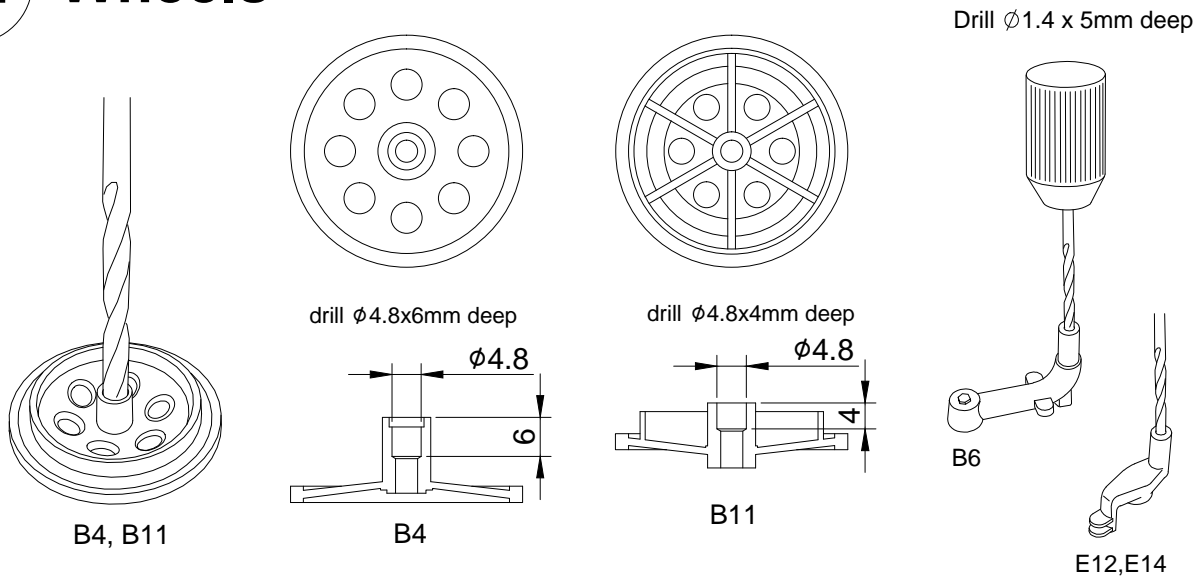


attach to lower hull

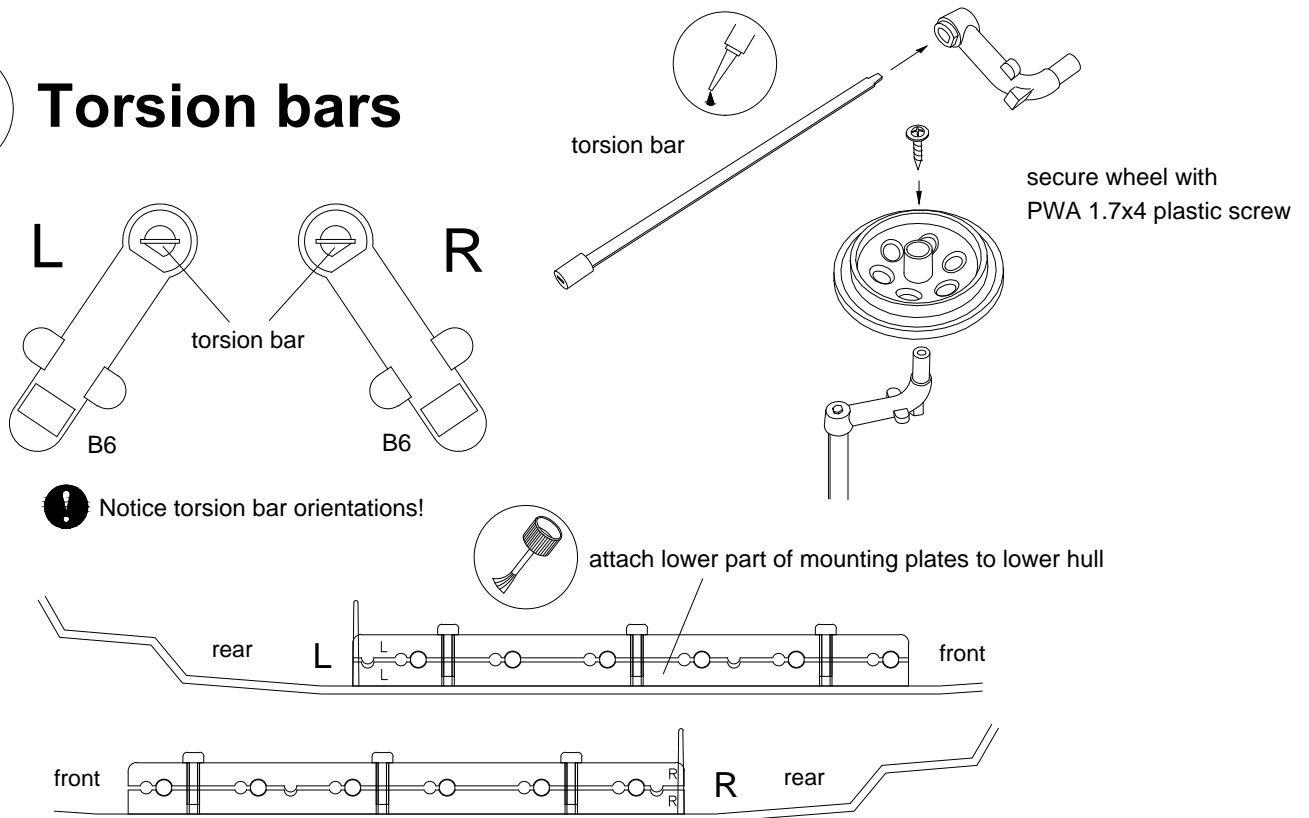
3 Snap catches



4 Wheels

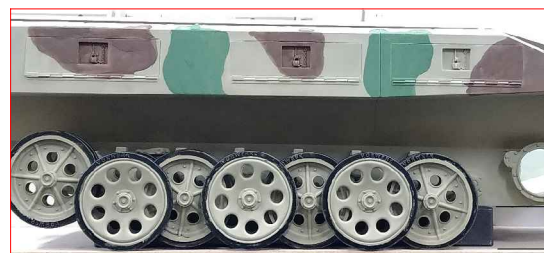


5 Torsion bars



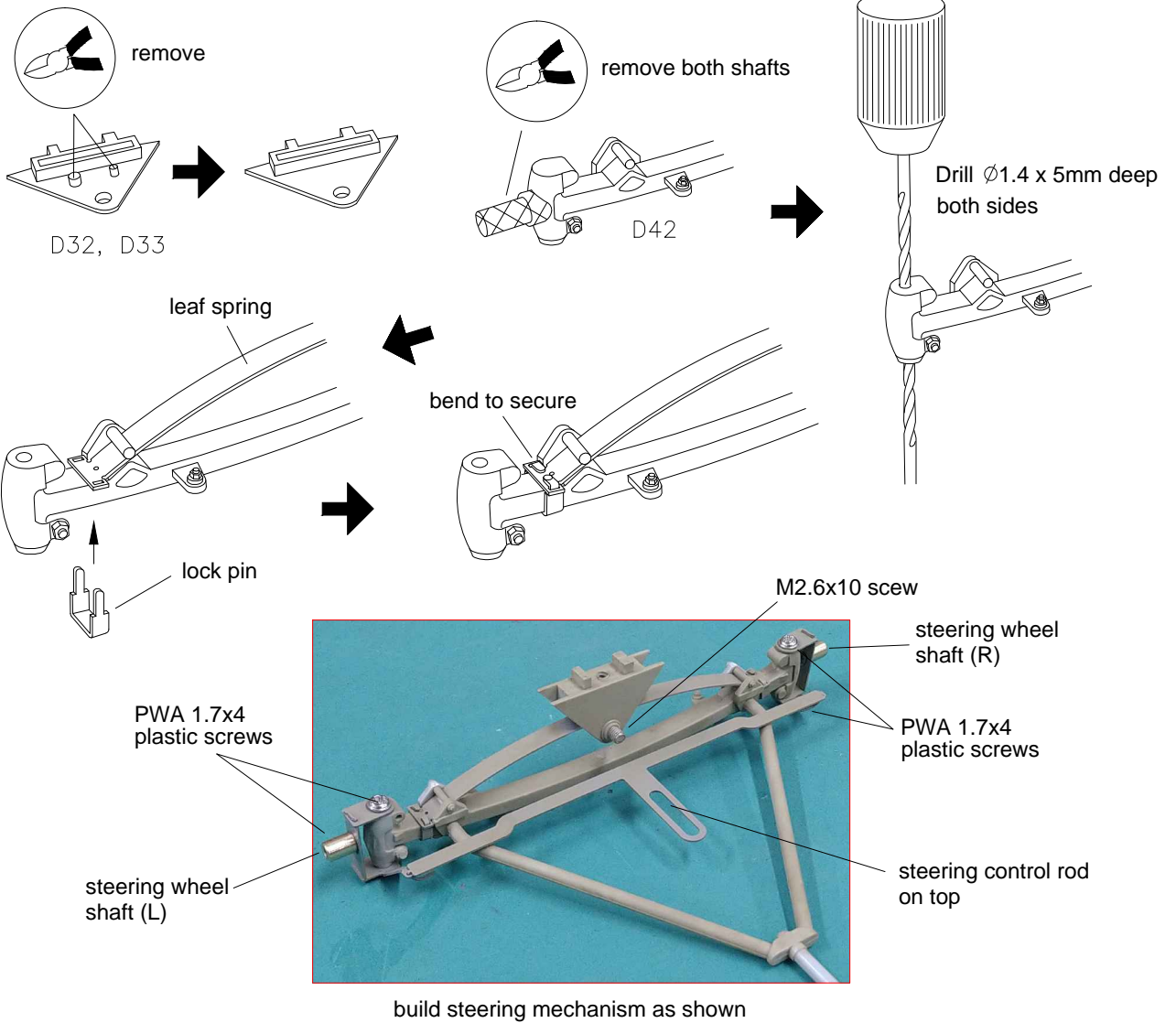
secure torsion bars by M3 screws

! do not over tight or it will break!

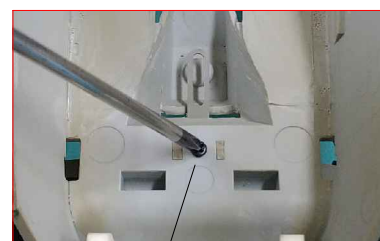


15mm

6 Steering wheels



put steering mechanism in position



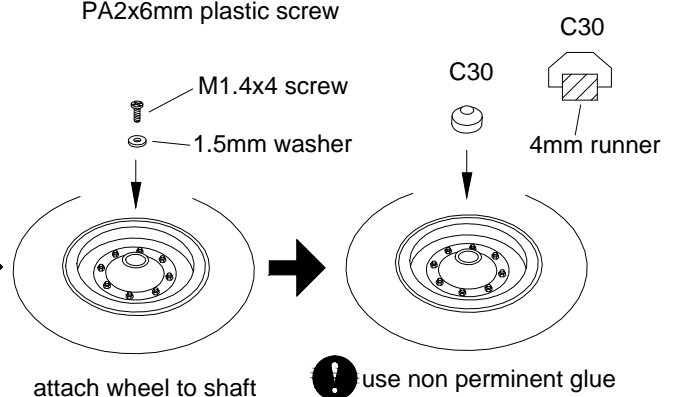
drill 1.5mm hole, secure with PA2x6mm plastic screw



drill 4.5mm hole on C12

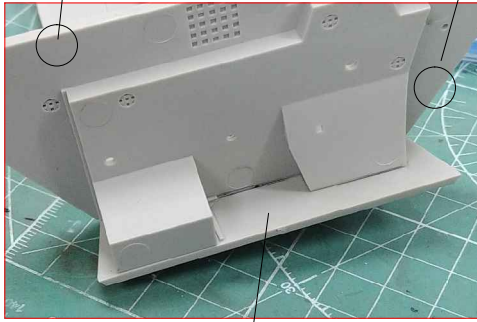


build the wheel



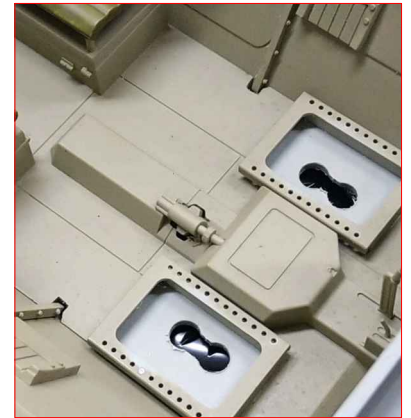
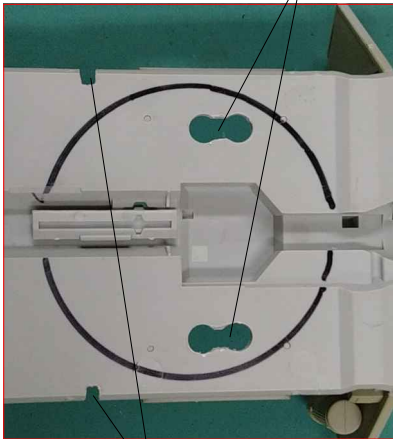
7 Speaker

made opening for machine gun cable made opening for battery cable

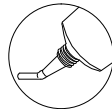


remove this part for gearbox

made opening for speaker



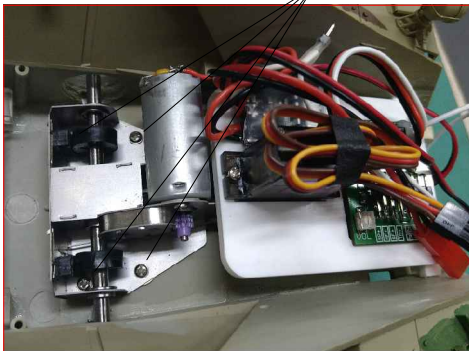
cut notch for part G1 and G3



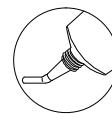
attach speaker

8 Gearbox

drill $\varnothing 1.4 \times 5\text{mm}$ holes, secure with PWA 1.7x4 plastic screws



keep wheels in neutral position
insert steering control rod



attach mounting poles to hull

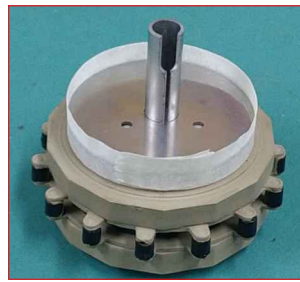


made opening for power switch
secure with PWA 1.7x4 plastic screws

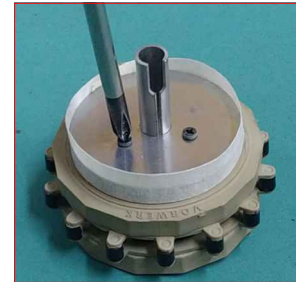
9 Sprocket



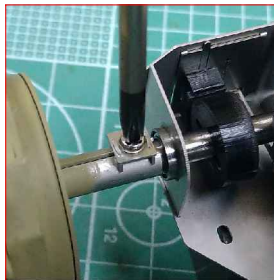
Drill $\varnothing 6\text{mm}$ hole at center



position sprocket mount
by adhesive tape

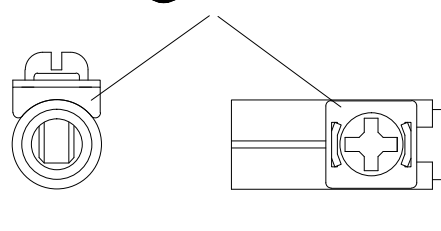


Drill $\varnothing 1\text{mm}$ holes, secure
with PA1.5x3 plastic screws



secure M2 set screw

! notice orientation



10 Machine gun



cut into two pieces



drill $\varnothing 1\text{mm}$ from muzzle



drill $\varnothing 1.8\text{mm}$ from other end



drill $\varnothing 1.5\text{mm}$



combine two parts, insert optical fibre



drill $\varnothing 1\text{mm}$ on G14



PA1.5x3 plastic screw



attach swing lever



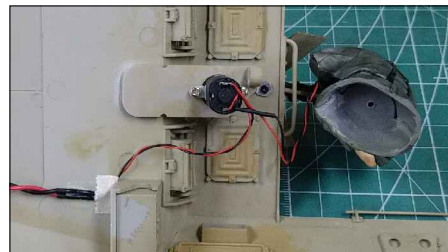
align to this mark
attach swing motor

10 Machine gun



TAMIYA Item 36303 1/16
WWII German elite infantryman

❗ Do not attach left arm and legs

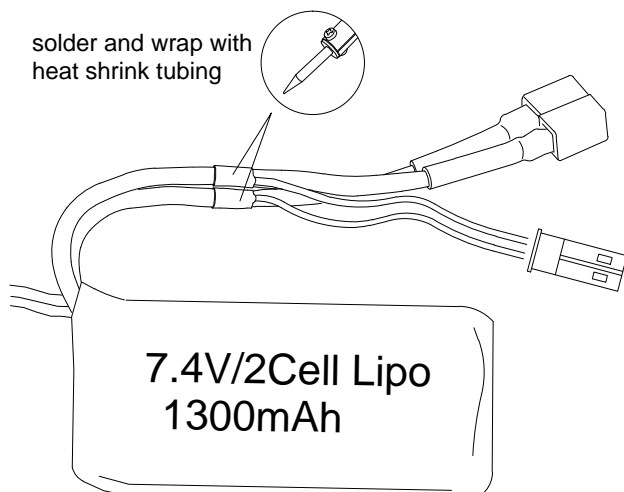


11 Connections



12 Using Lipo battery

❗ Lipo battery can be dangerous if not use properly! Follow all safety precautions and always use a dedicated Lipo charger.



- 1) Use 7.4V/2Cell Lipo battery
- 2) Solder ESC power connector as shown.
- 3) Keep original connector for charging.