

RC Conversion Kit for TAMIYA

1/35 T55A (Item no: 35257)

User Manual (Version 1.0)

Attention!

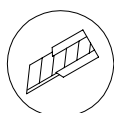
- 1) This kit is designed for experienced model makers. It may be difficult for beginners. Please read this manual thoroughly to see if you have the required skills and tools.
- 2) Cutting tools are used frequently in this kit. Extra care should be taken to avoid injury. Wear hand gloves and eye protection spectacle if necessary.
- 3) Keep room well ventilated when working with cements, paints and organic solvents.
- 4) Visit www.35rctank.com for addition tips and update information.



side cutter



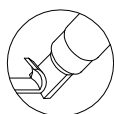
apply cement



modelling knife



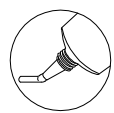
do not apply cement



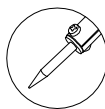
carving knife



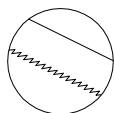
apply instant glue



all purpose glue



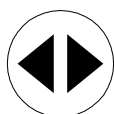
solder



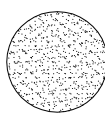
hand saw



apply lubrication oil



both sides

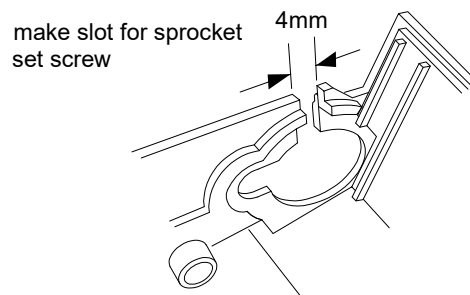
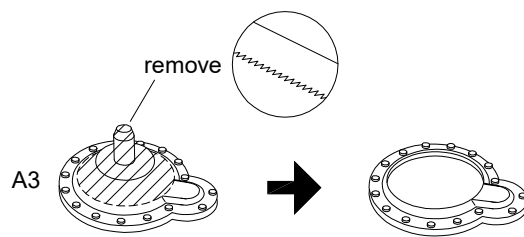
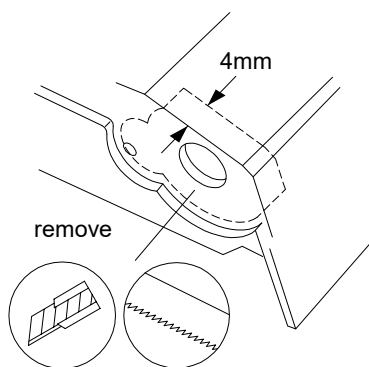
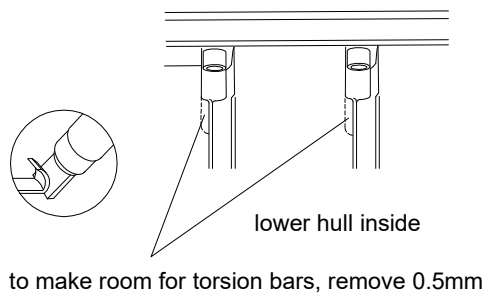
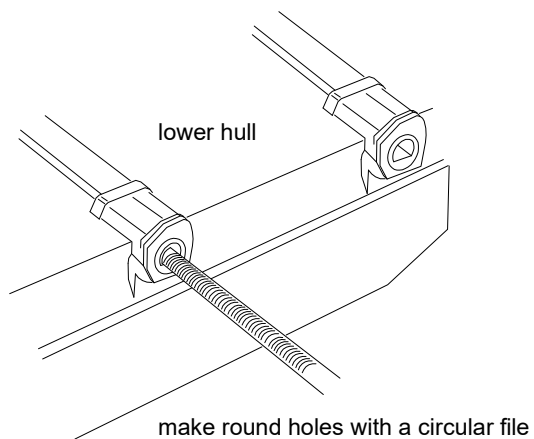


polish with sand paper

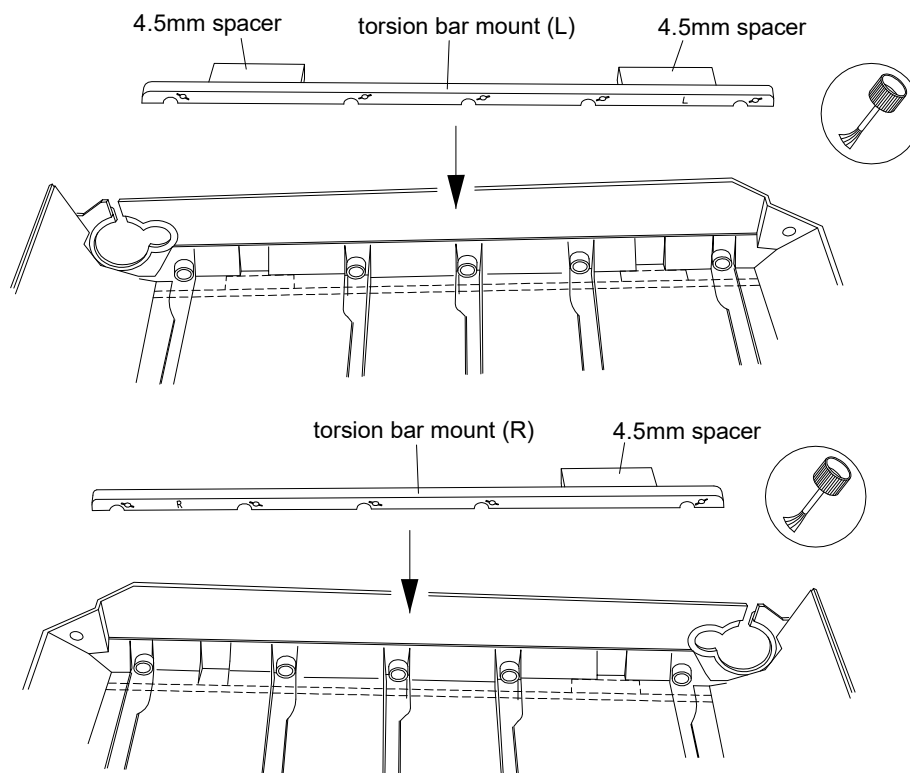


Attention!

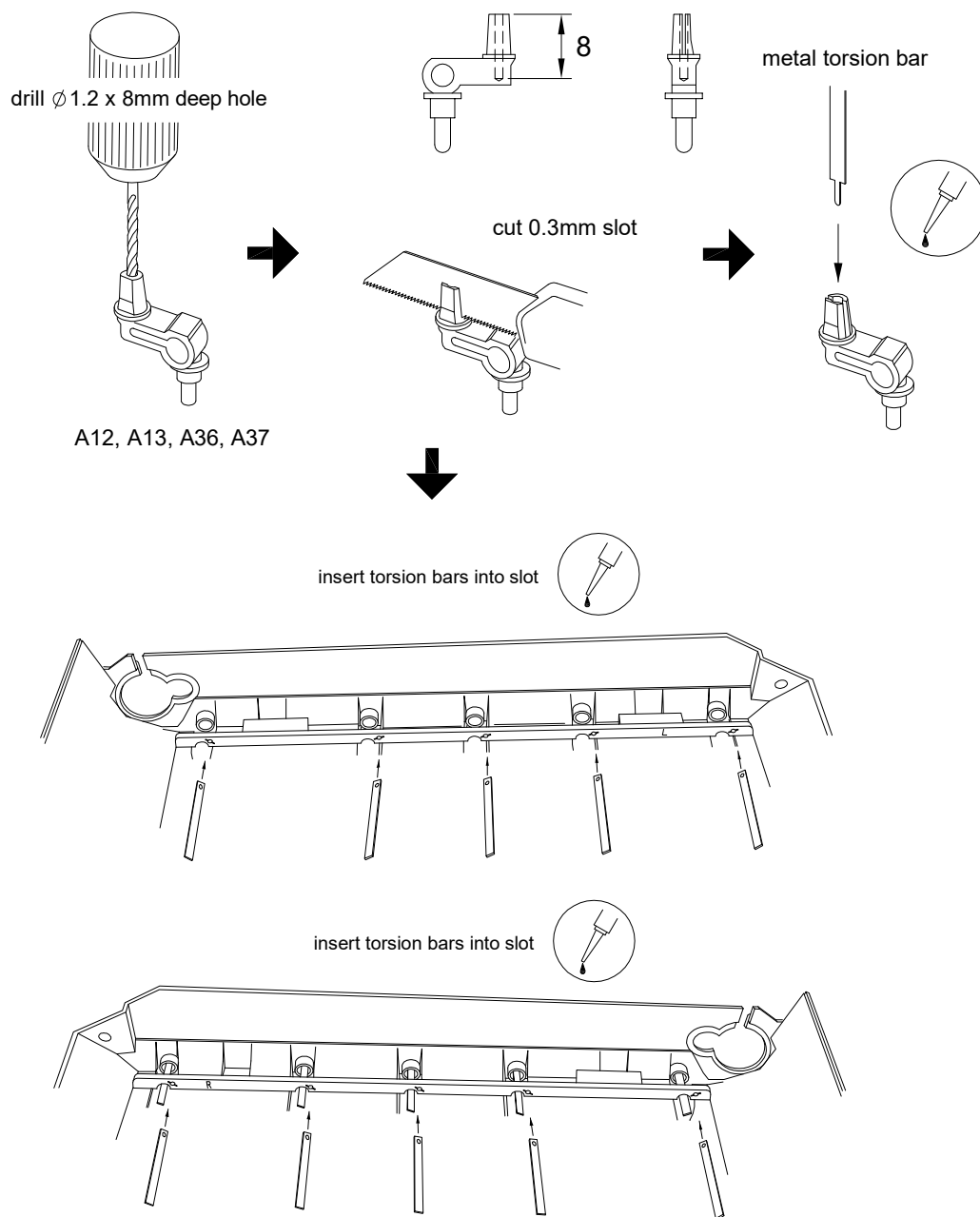
1 Lower hull



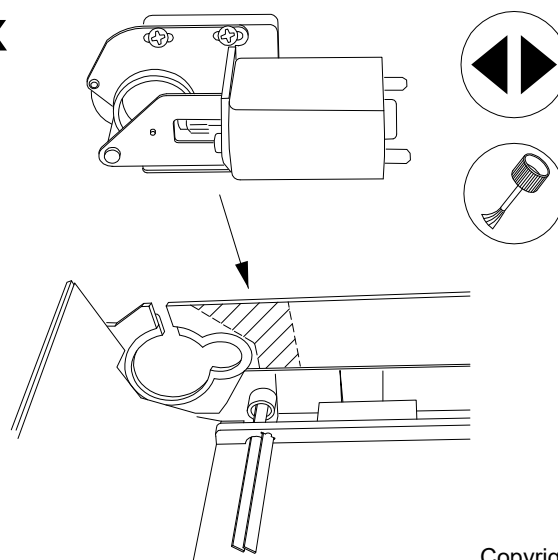
2 Torsion bars



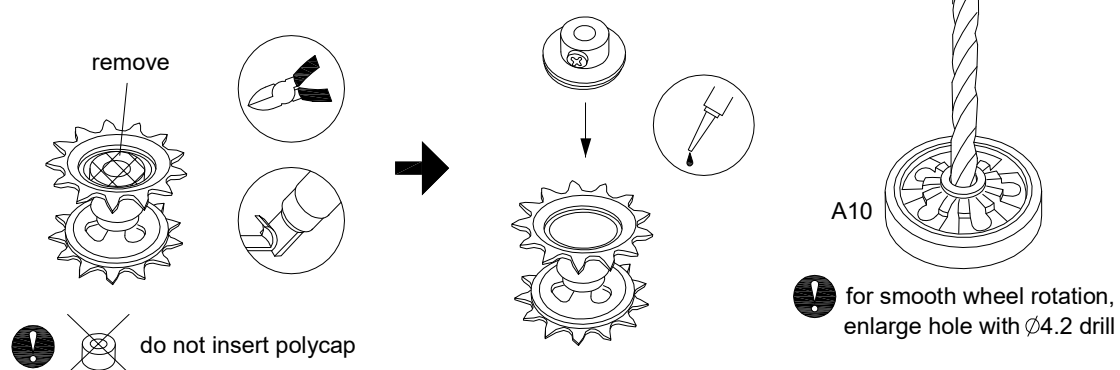
2 Torsion bars



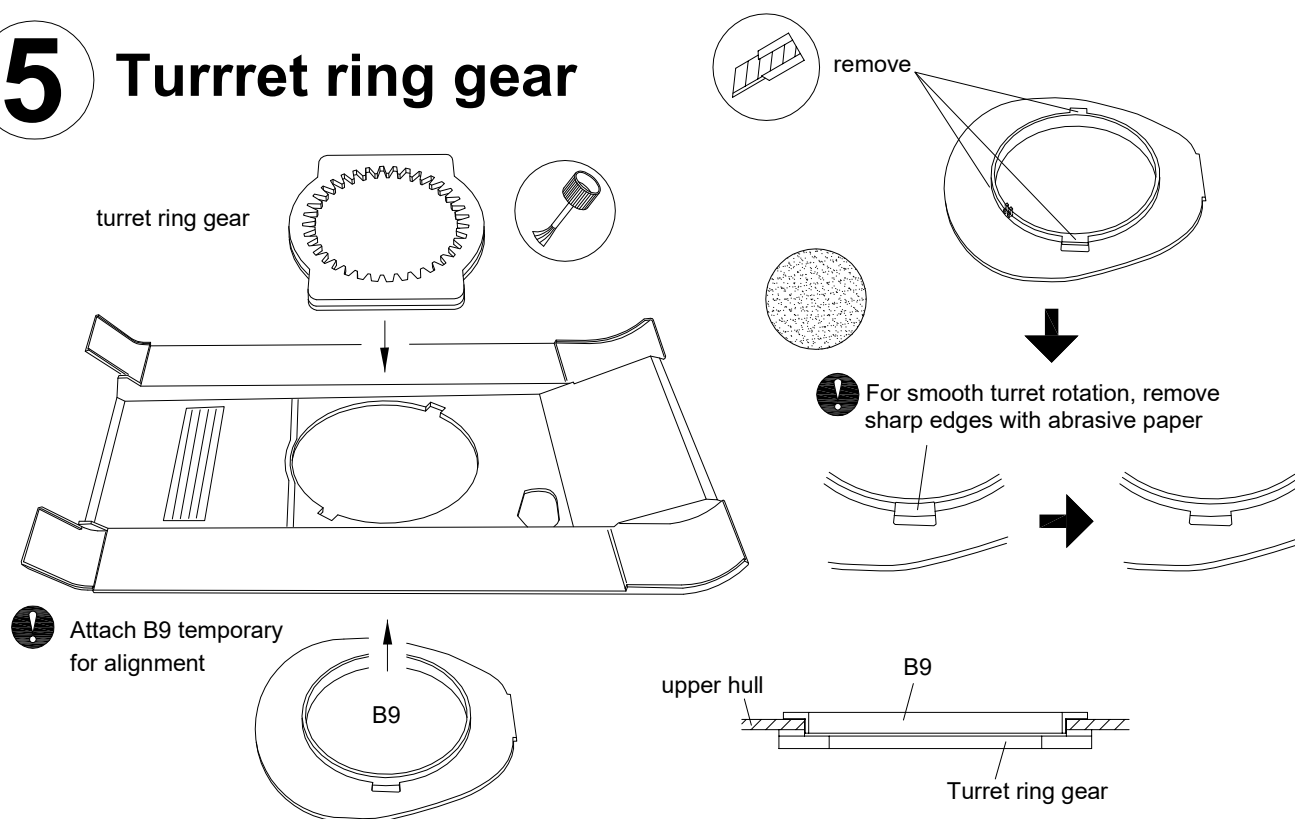
3 Gearbox



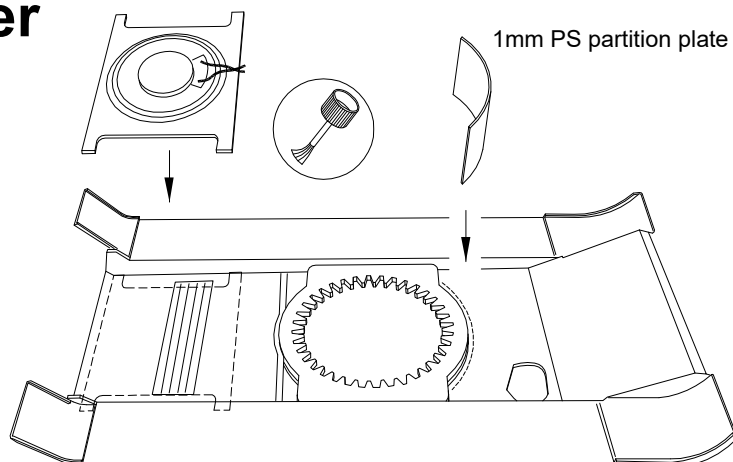
4 Sprocket and wheels



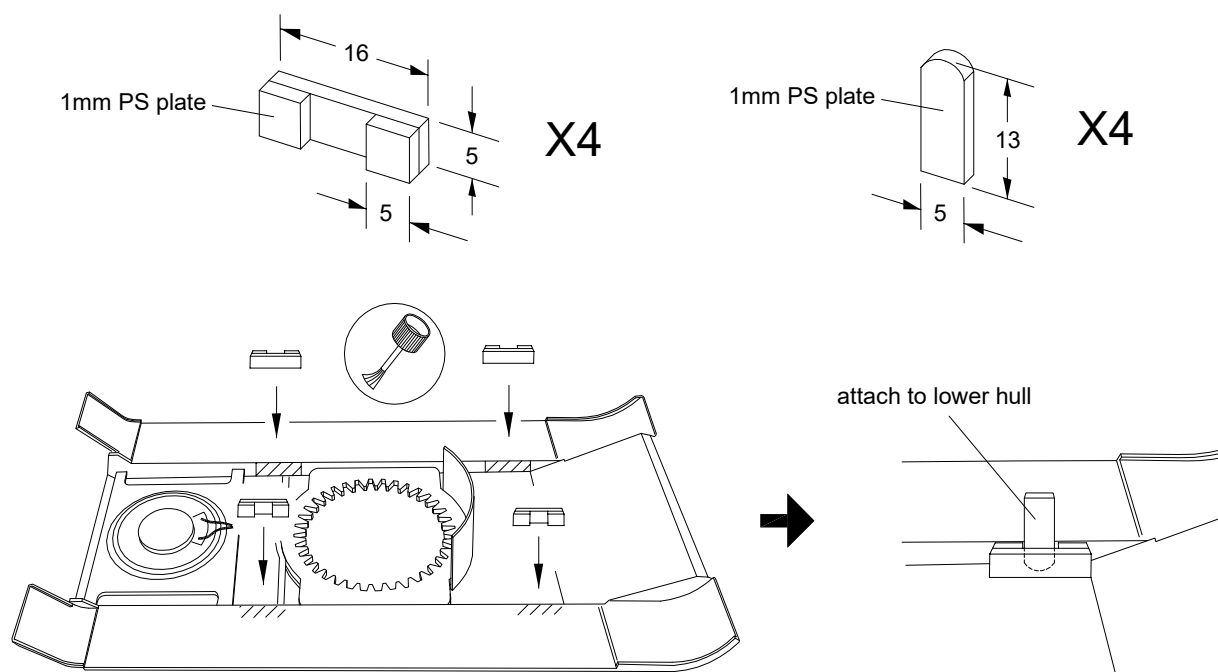
5 Turret ring gear



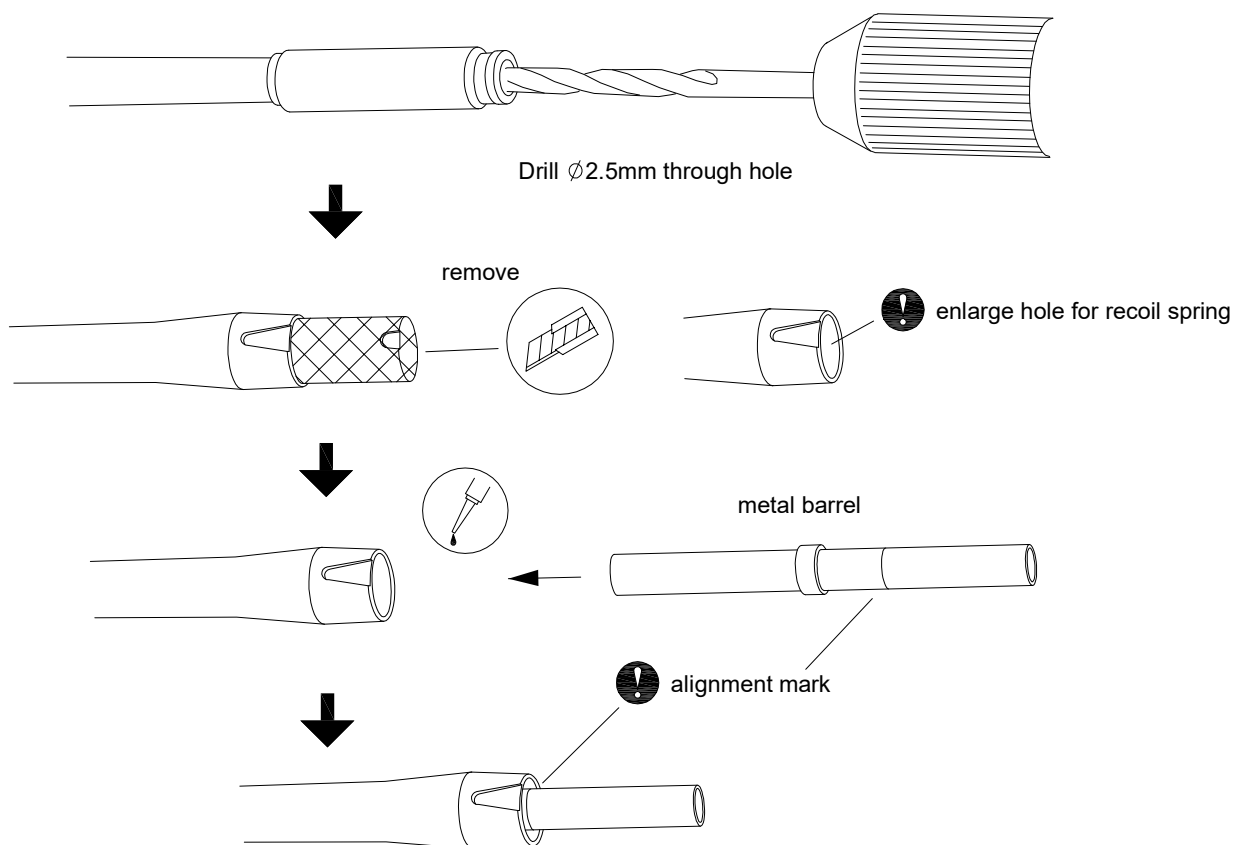
6 Speaker



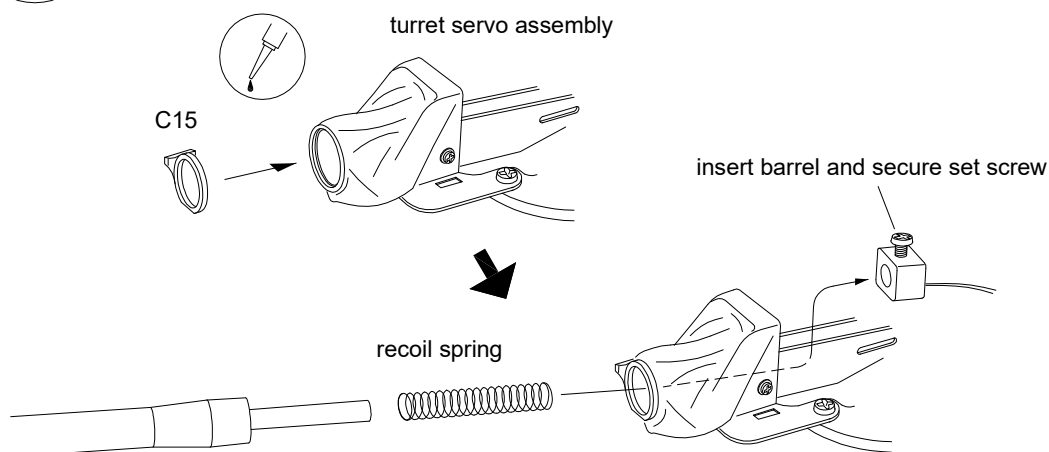
7 Connecting upper and lower hull



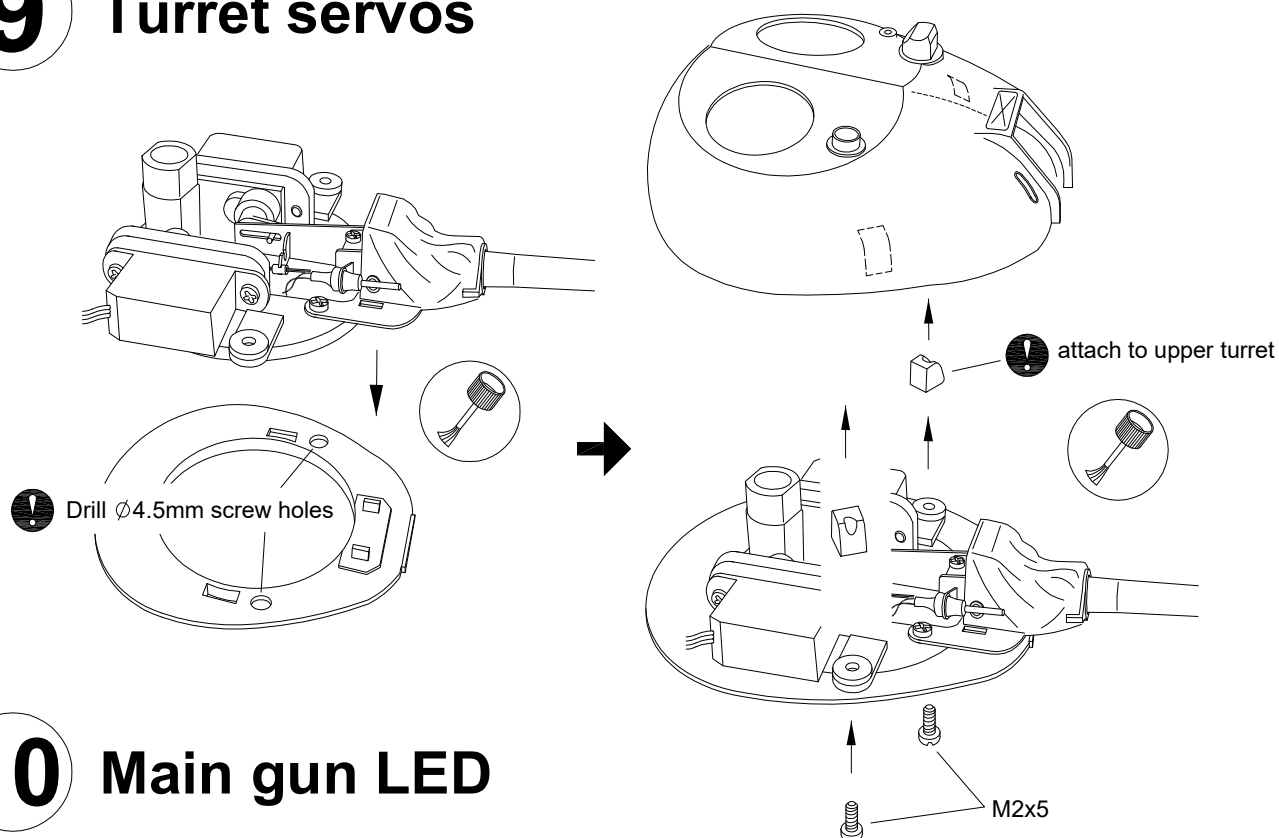
8 Main gun



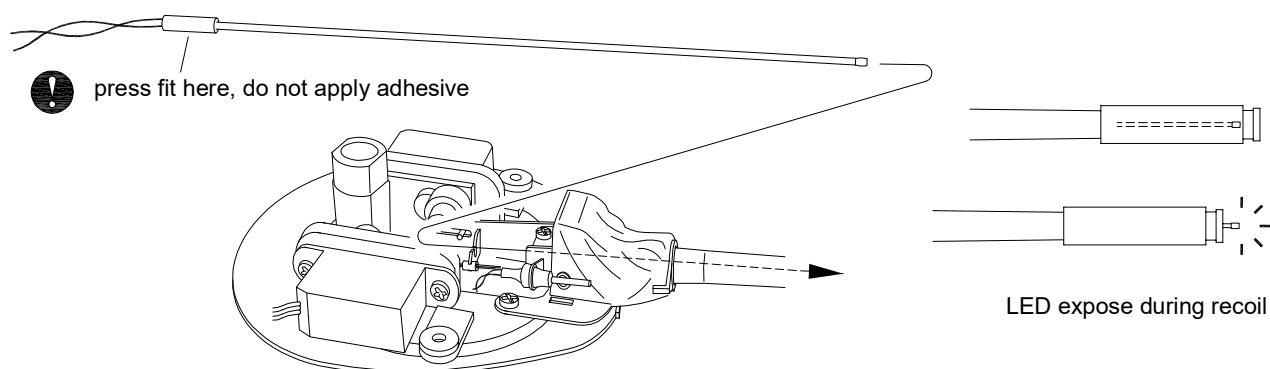
8 Main gun



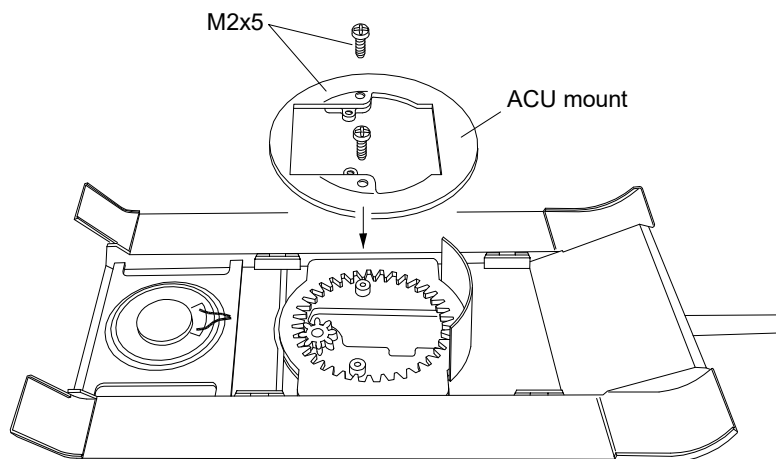
9 Turret servos



10 Main gun LED



11 Attach turret

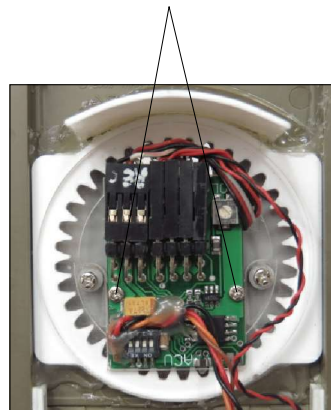


12 ACU connections

- ! notice cable positions
- keep cables away from moving parts
- secure cables with adhesive tape

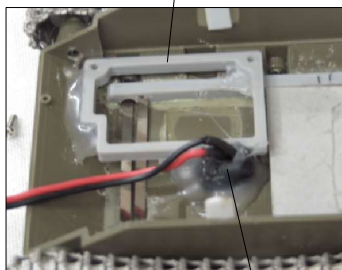


secure ACU with M1.7 screws



13 Install MTC-2 mini tank controller

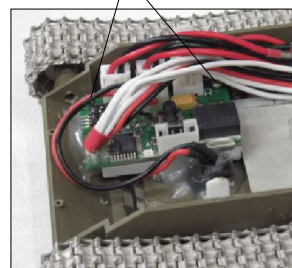
MTC-2 mount



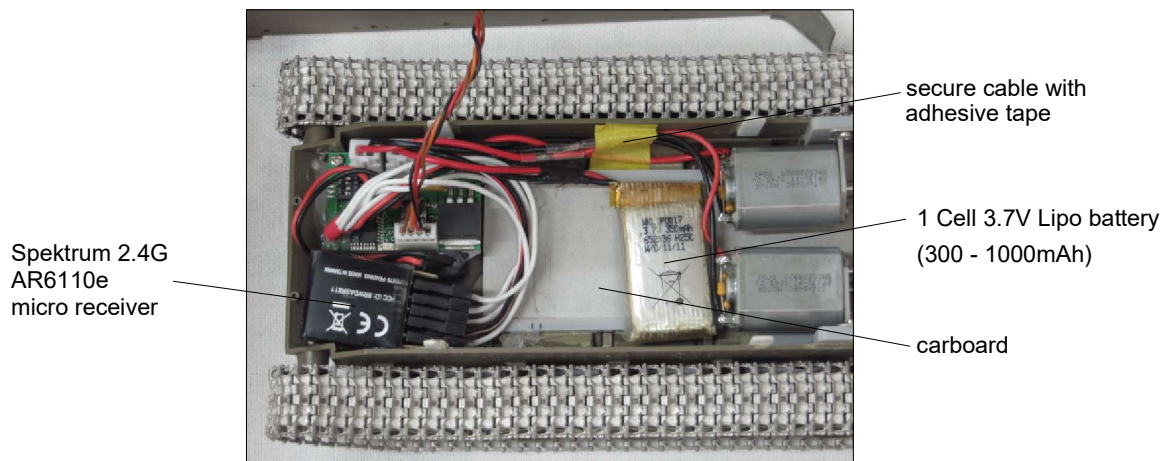
MTC-2 power switch
(make opening in lower hull is optional)



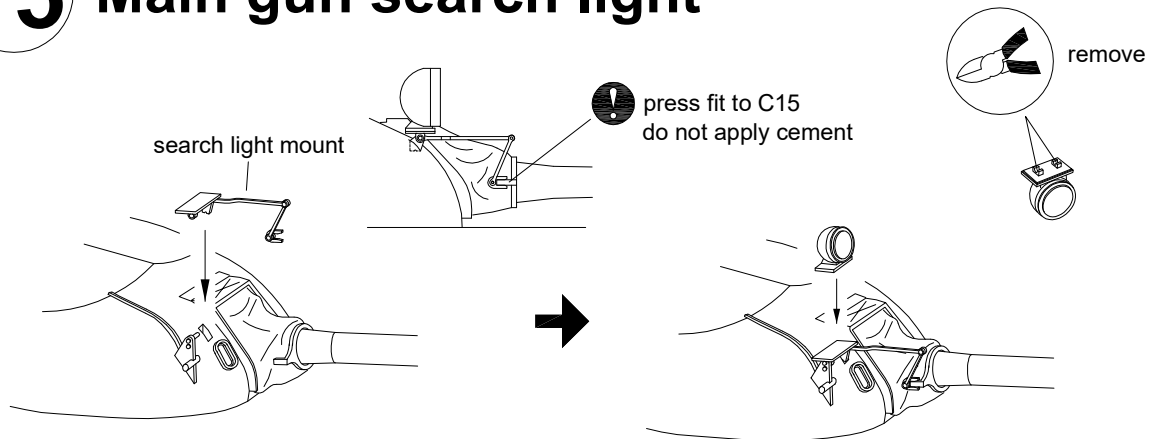
Secure MTC-2
by M2 x 5 screws



14 Lower hull connections



15 Main gun search light



16 Using Lipo battery

! Lipo battery can be dangerous if not use properly! Follow all safety precautions and always use a dedicated Lipo charger.

- 1) Use 3.7V/1Cell Lipo battery (300-1000mAh)
- 2) Make sure battery is small enough to put inside the lower hull.
- 3) Solder connector for MTC-2 as shown. Keep original connector for charging.

