

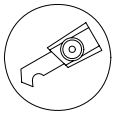
RC Conversion Kit for Tamiya 1/35 Leopard 2A5/A6 Tank

with MTC-2, ACU and GSU

User Manual

Attention!

- 1) This kit is designed for experienced model makers. It may be difficult for beginners. Please read this manual thoroughly to see if you have the required skills and tools.
- 2) Cutting tools are used frequently in this kit. Extra care should be taken to avoid injury. Wear hand gloves and eye protection spectacle if necessary.
- 3) Keep room well ventilated when working with cements, paints and organic solvents.
- 4) Visit www.35rctank.com for addition tips and update information.



scriber



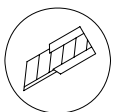
apply cement



side cutter



do not apply cement



modelling knife



apply instant glue



carving knife



wait overnight

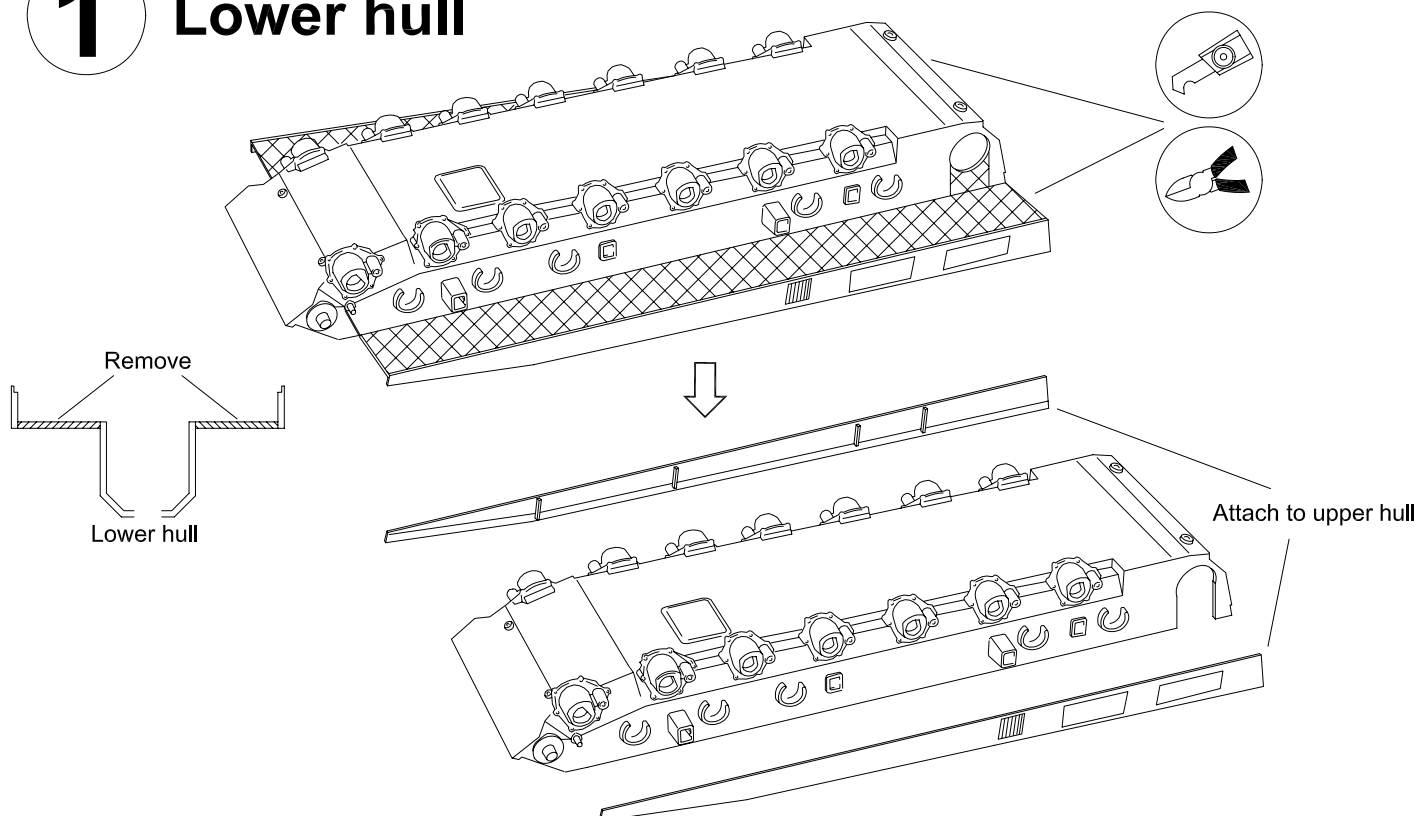


Attention!

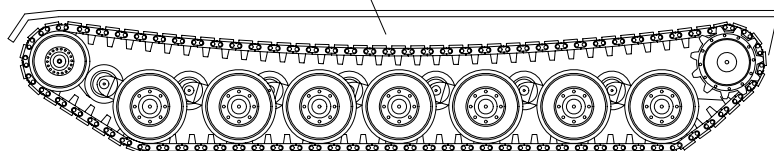


solder

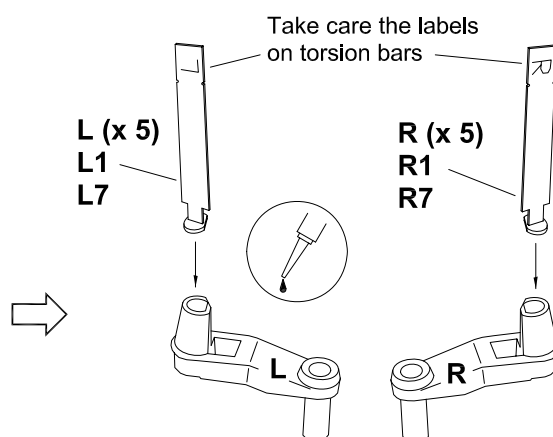
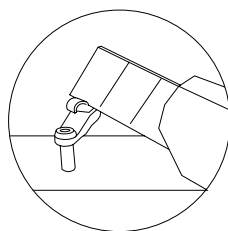
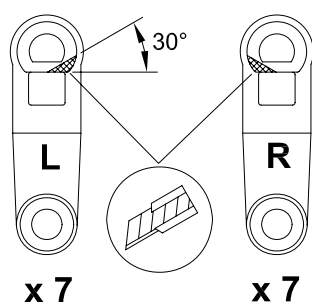
1 Lower hull



! (Optional) When using metal tracks, remove the supporting wheels and shock absorbers. This allow the tracks keep in tension by its weight. Tracks run smoother and will not detach easily even at high speed.

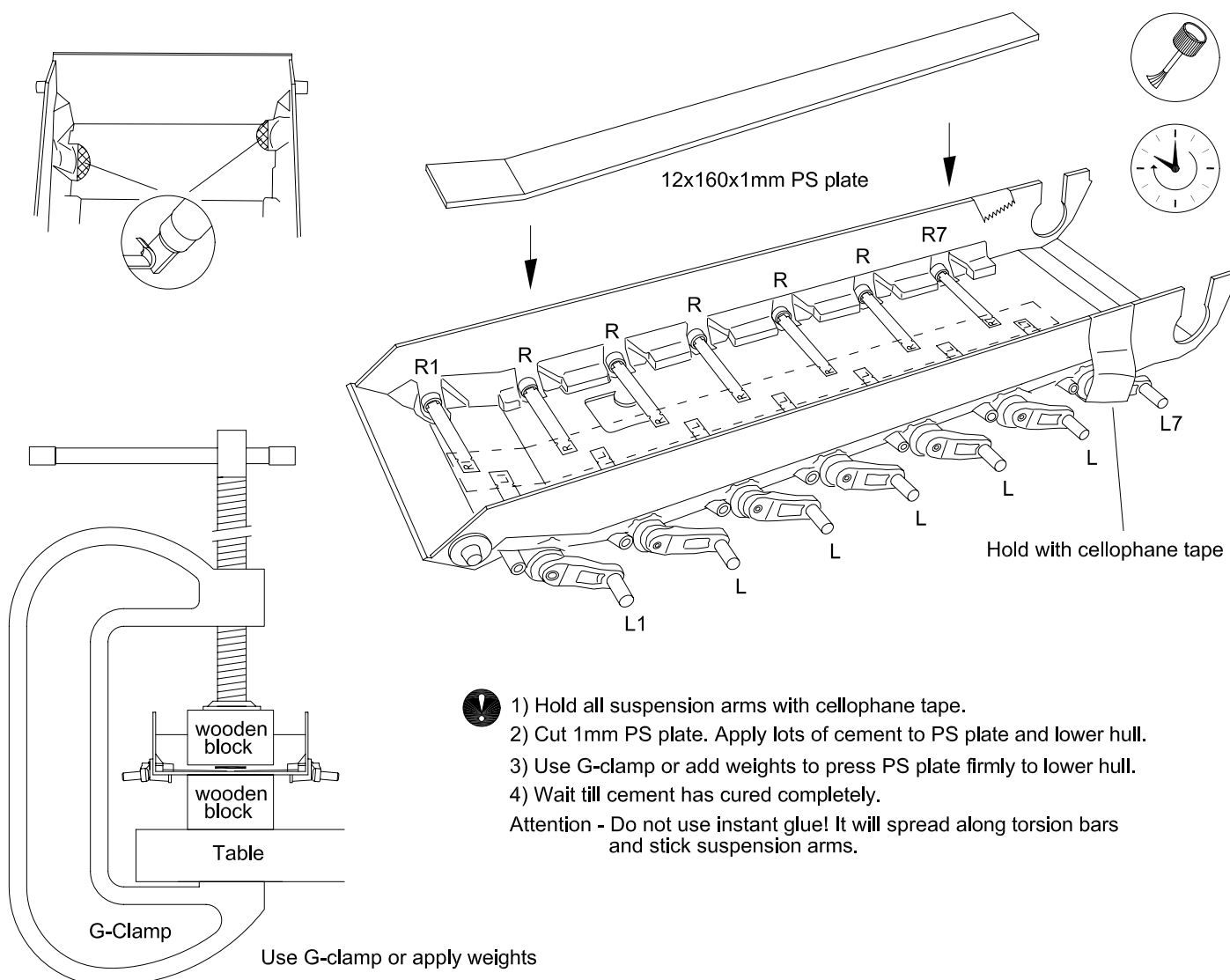


2A Suspension arms

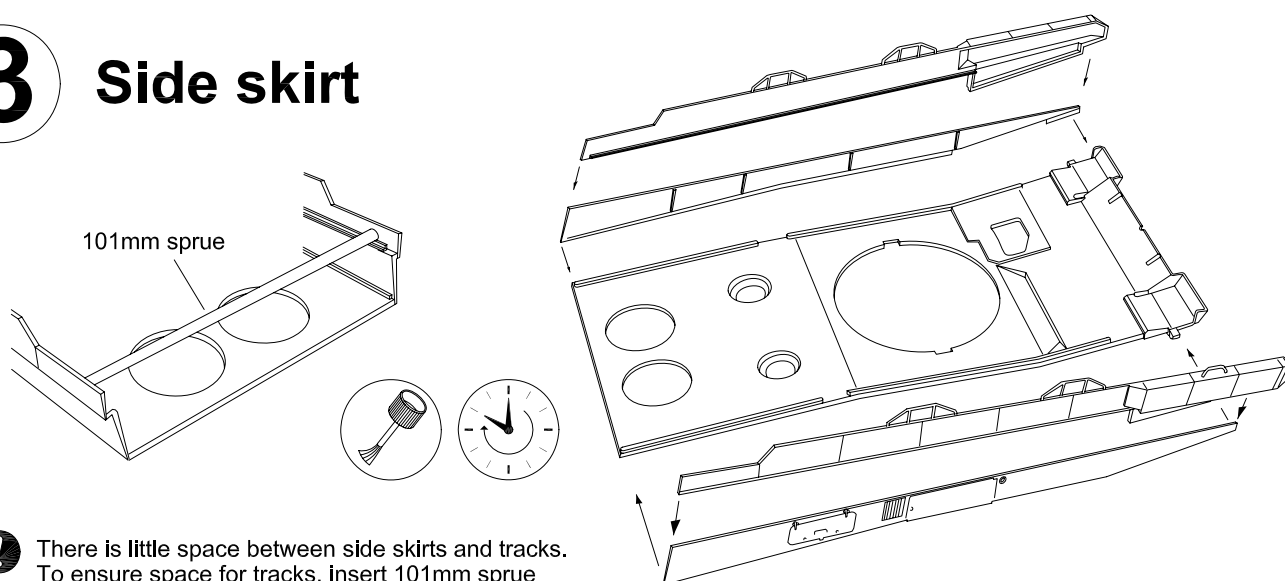


Wait a few hours for instant glue to cure completely

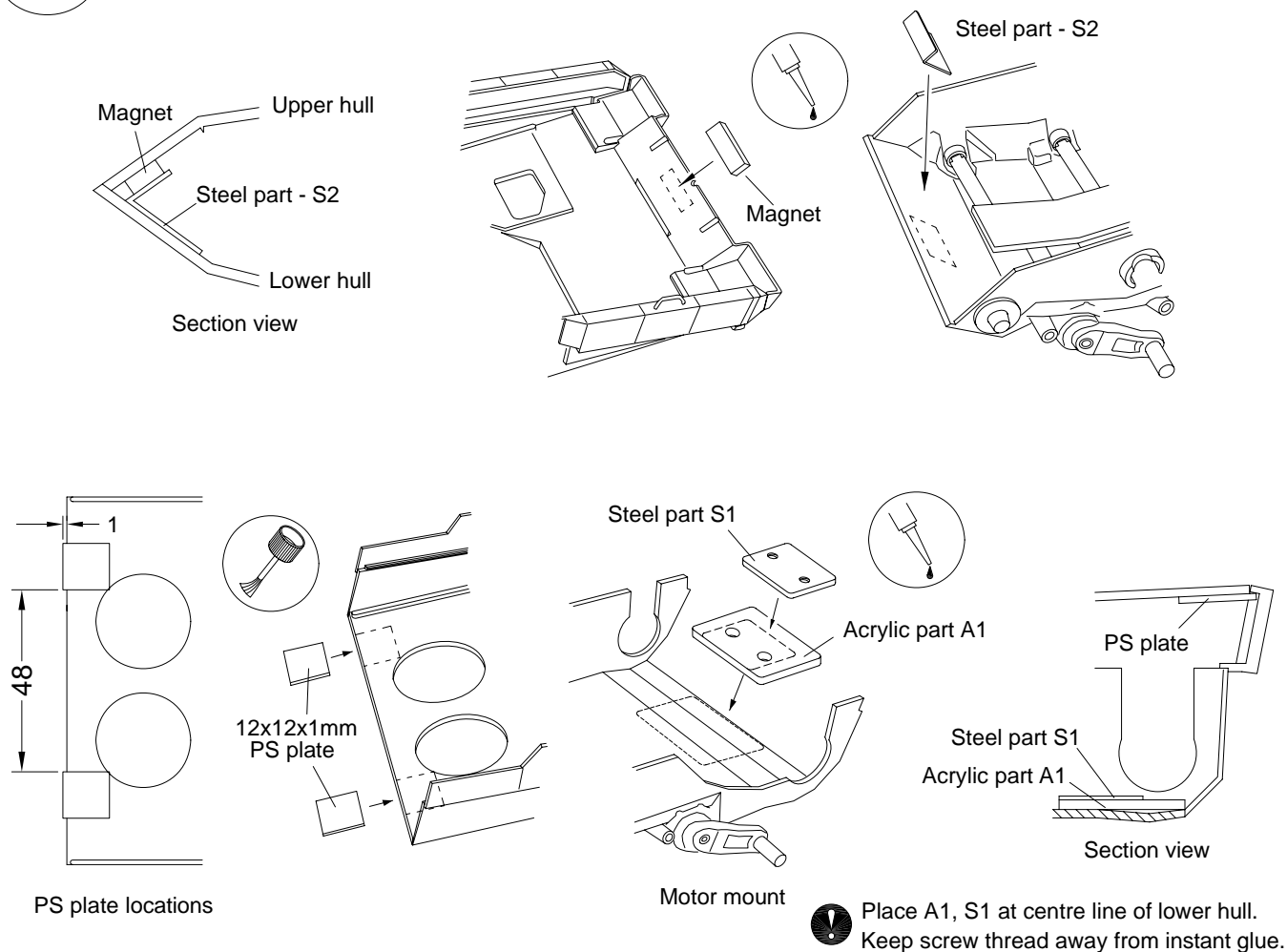
2B Suspension arms



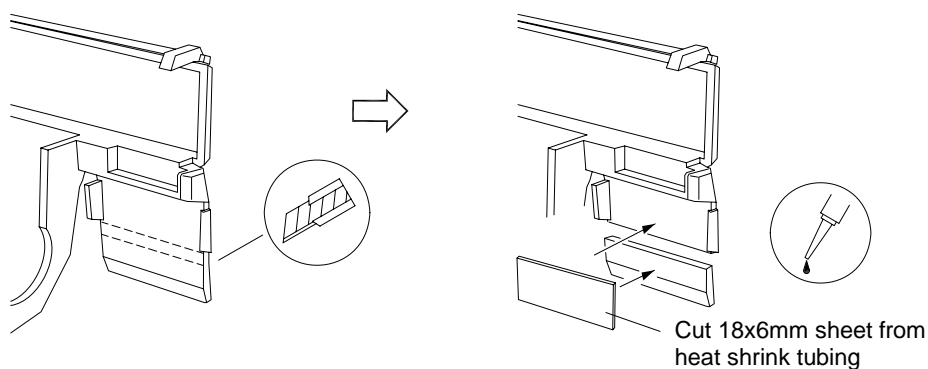
3 Side skirt



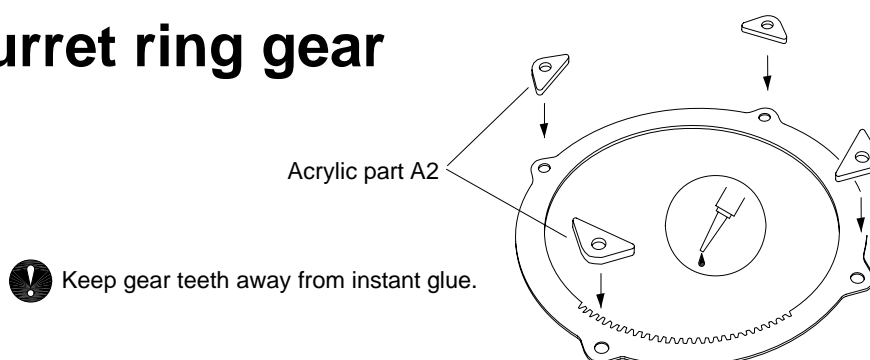
4 Magnetic catch and motor mount



5 Flexible mud guide (optional)



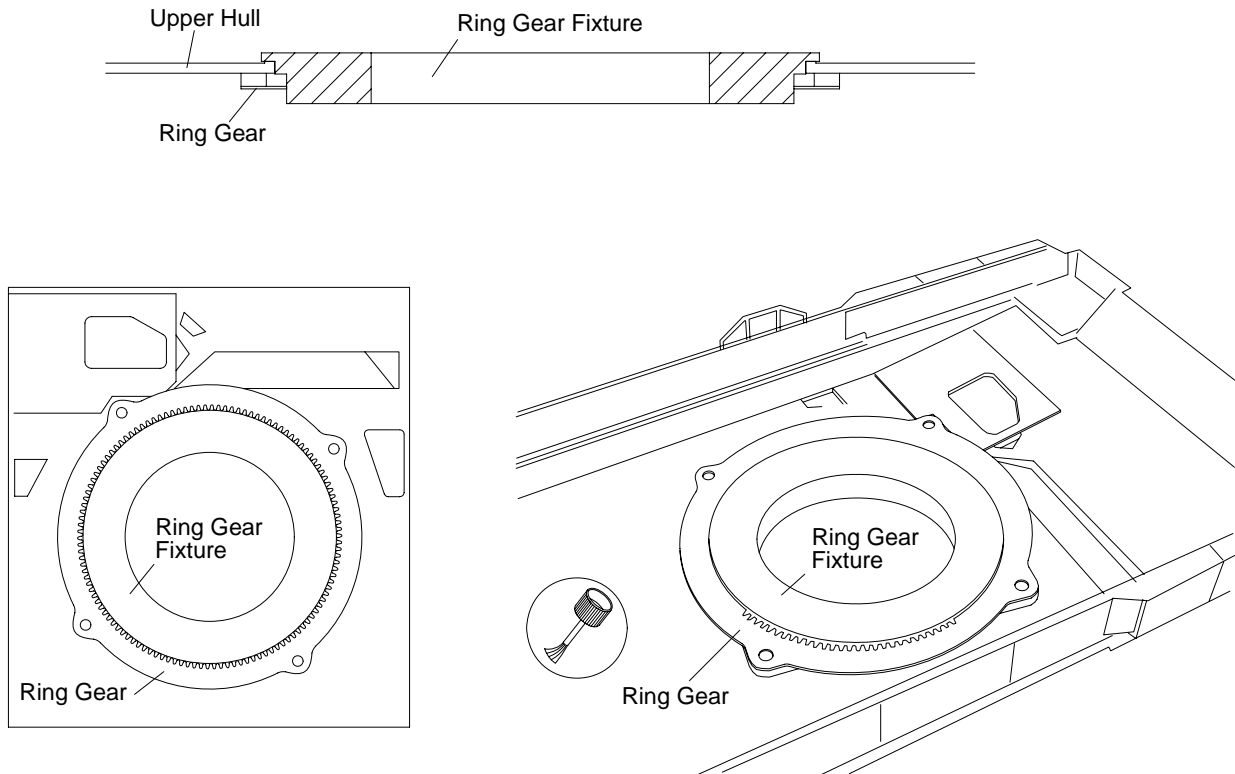
6A Turret ring gear



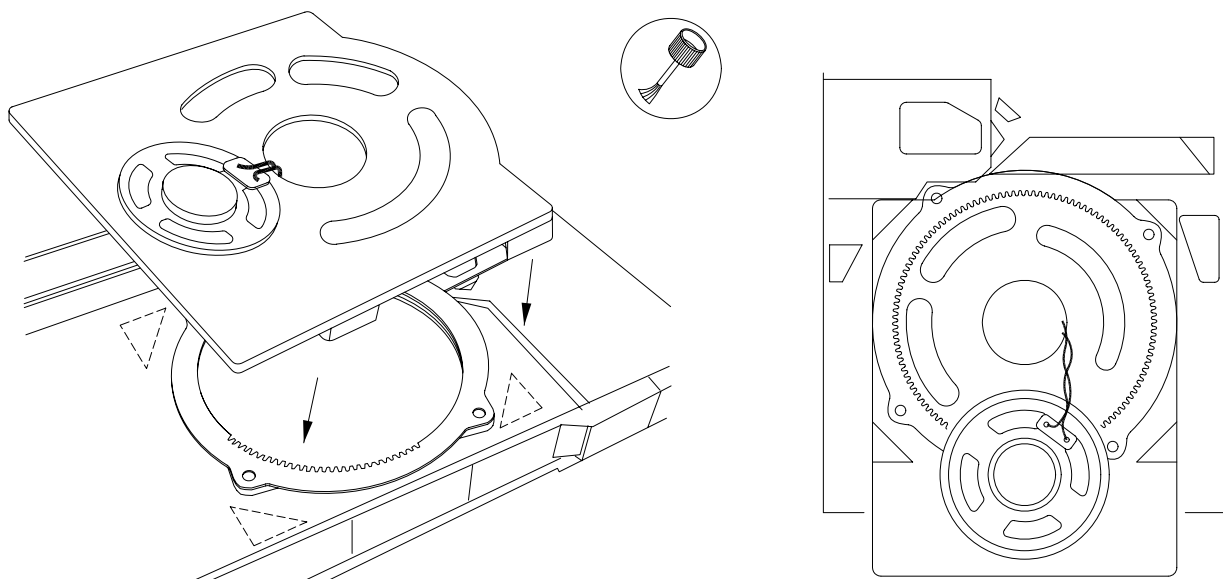
6B Turret ring gear

To have a smooth turret rotation, turret ring gear must be positioned with high accuracy:

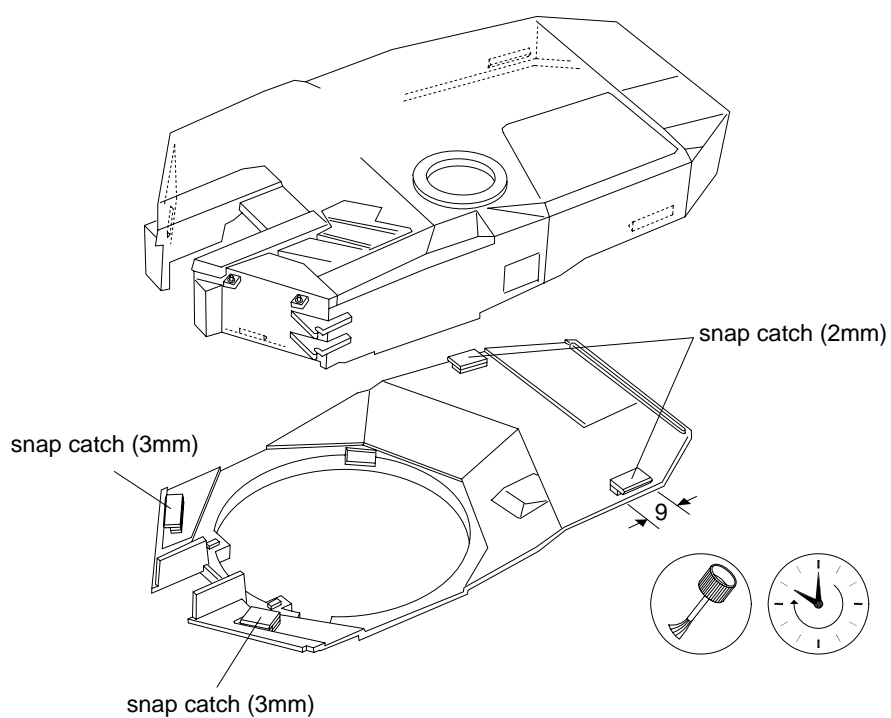
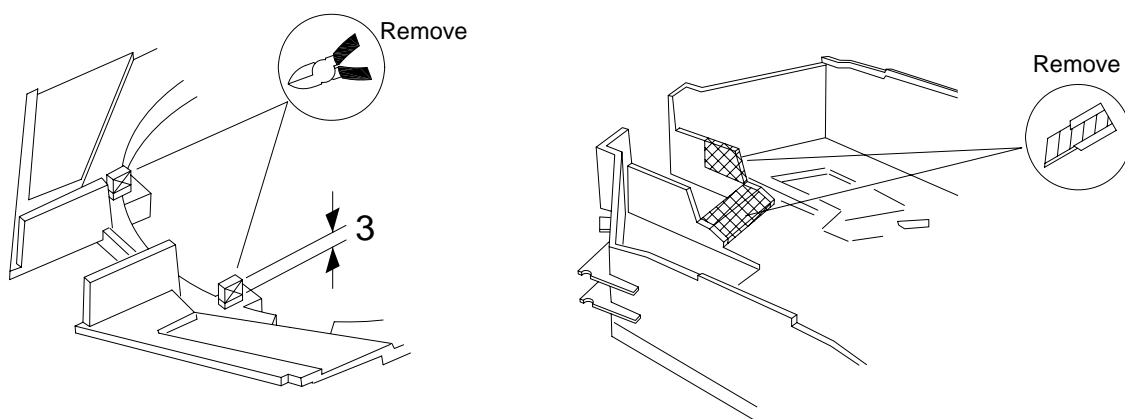
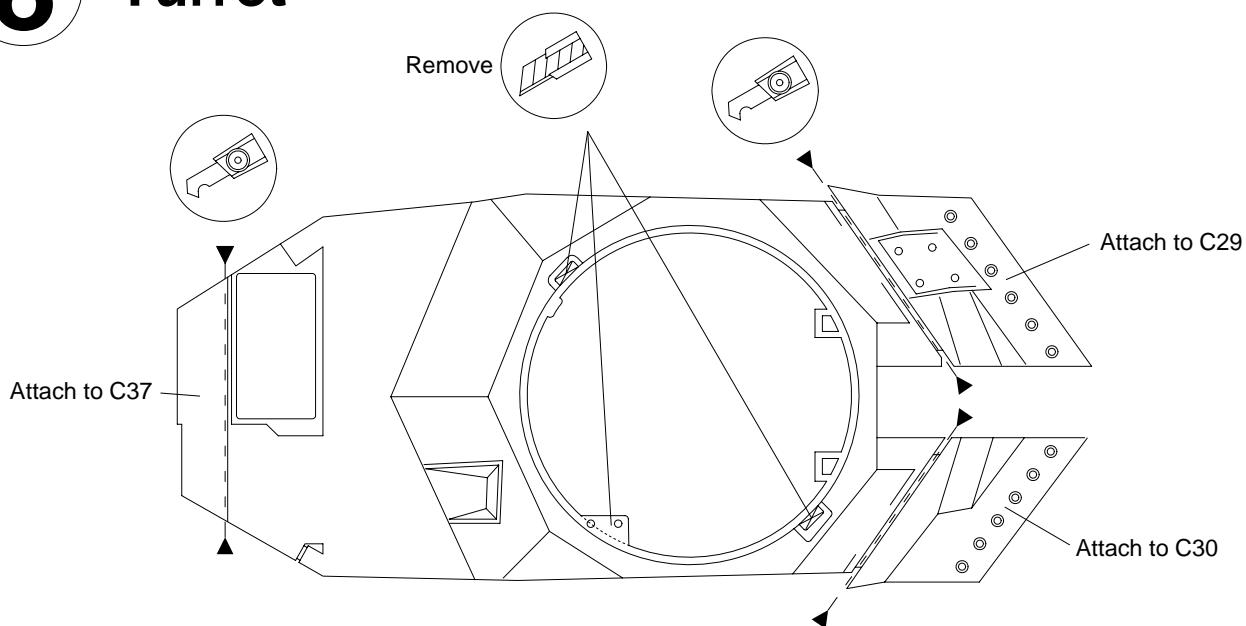
- 1) Insert the ring gear fixture to upper hull.
- 2) Position the ring gear in position as shown.
- 3) Apply instant glue. Take care not to stick the fixture!



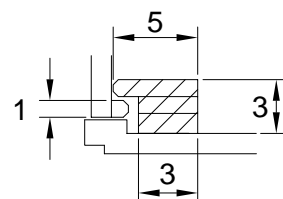
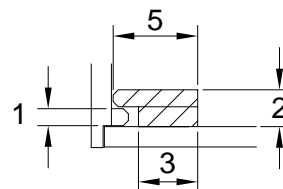
7 Speaker



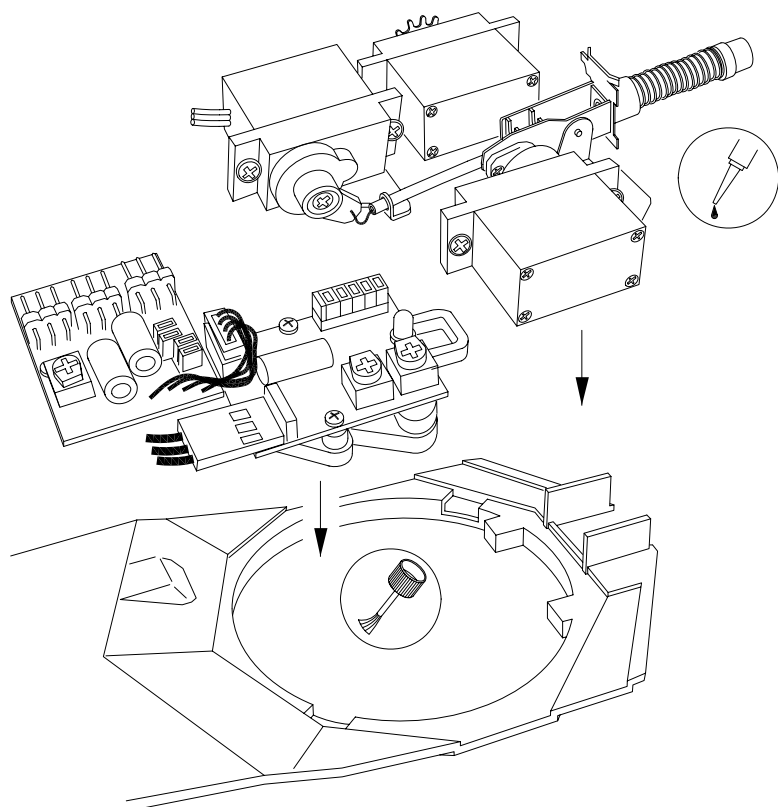
8 Turret



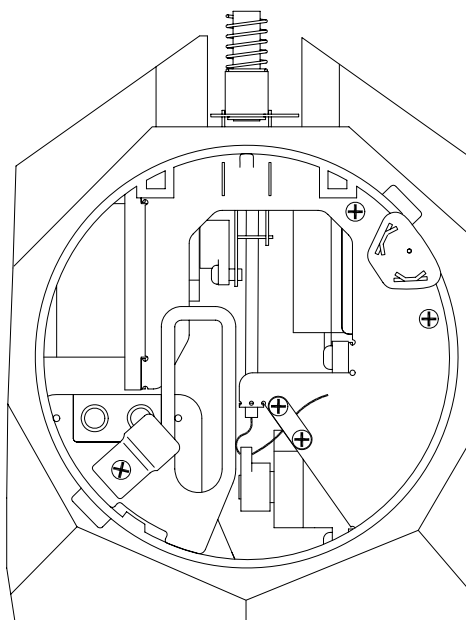
Use 1mm PS plate to make four pairs of snap catch.



9 Servo assembly, ACU and GSU

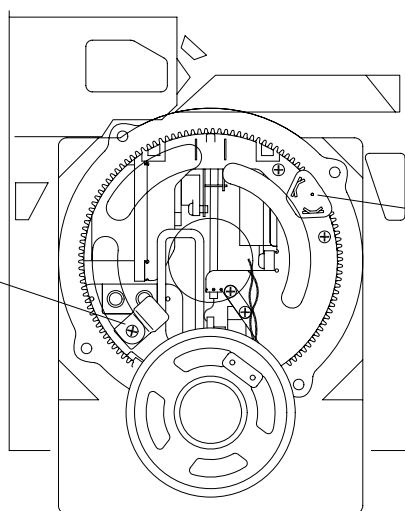
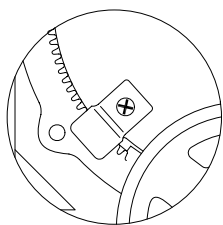


- 1) Position servo assembly as shown.
- 2) Check alignment before applying instant glue.
- 3) Apply instant glue carefully. Too much glue will stick moving parts!

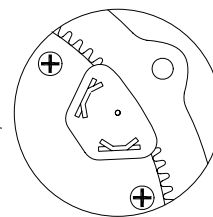


10 Attach turret

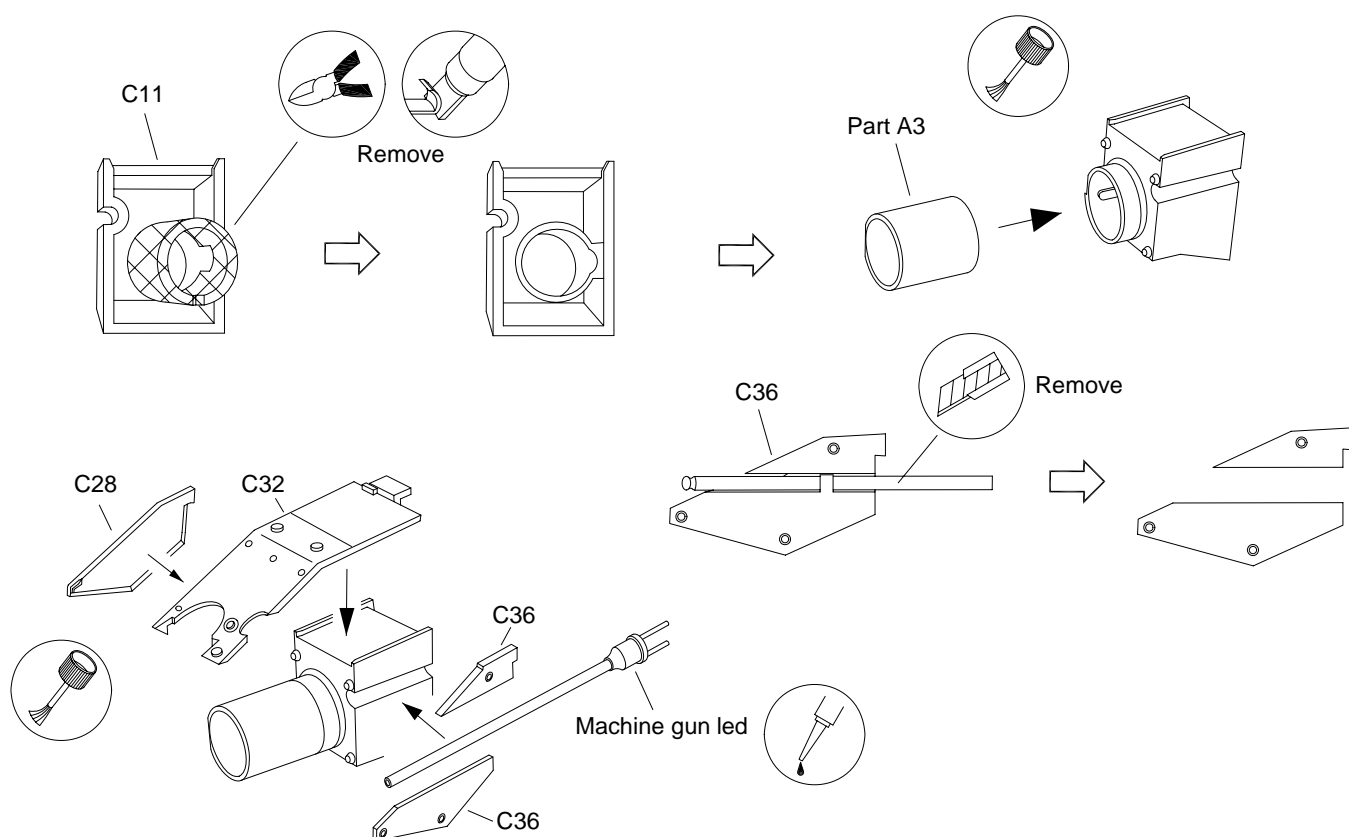
- 2) Rotate and secure the locking plate.



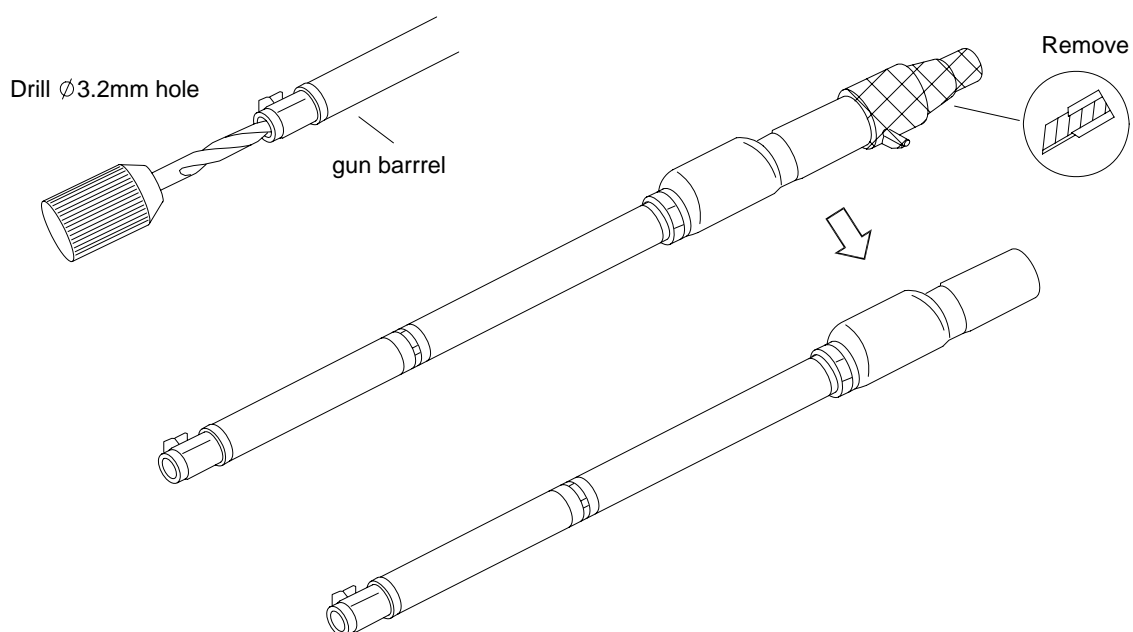
- 1) Engage pinion into ring gear.



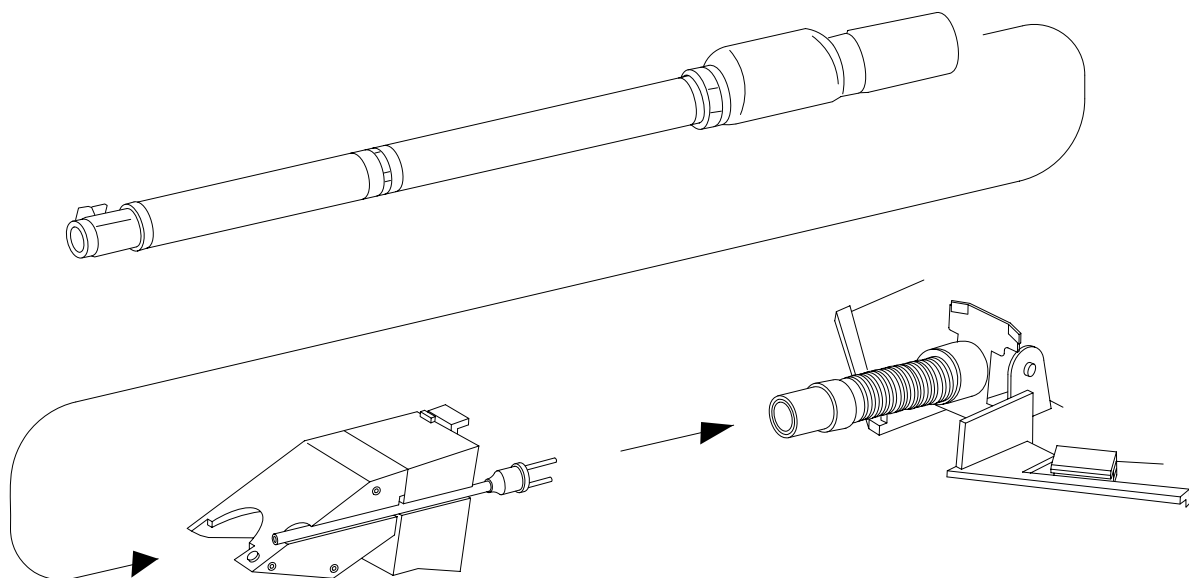
11 Gun mantlet



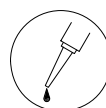
12 Gun barrel



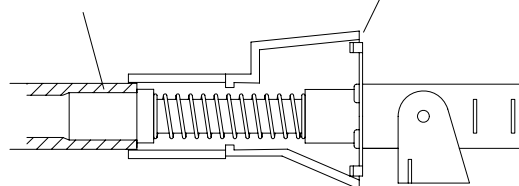
13 Attach gun barrel and gun mantlet



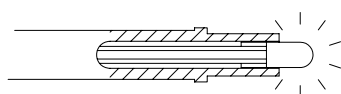
Press fit gun barrel to recoil unit.
Do not use permanent glue.



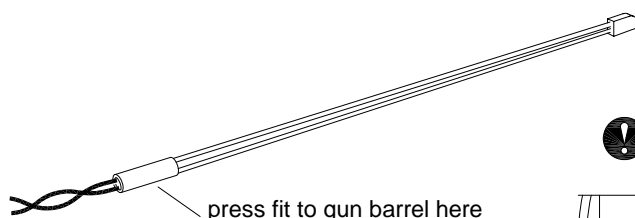
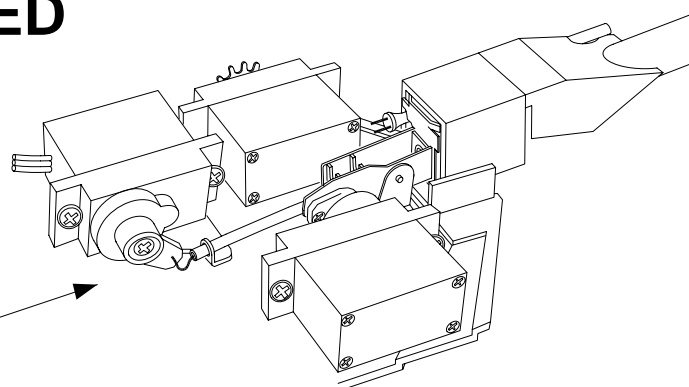
Test the recoil mechanism before apply instant glue. Make sure the gun barrel and gun mantlet are well aligned.



14 Attach gun flash LED



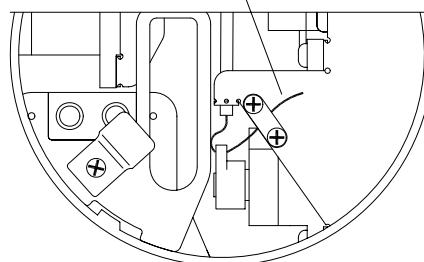
Gun flash LED will explode during recoil.
Adjust the LED position if necessary.



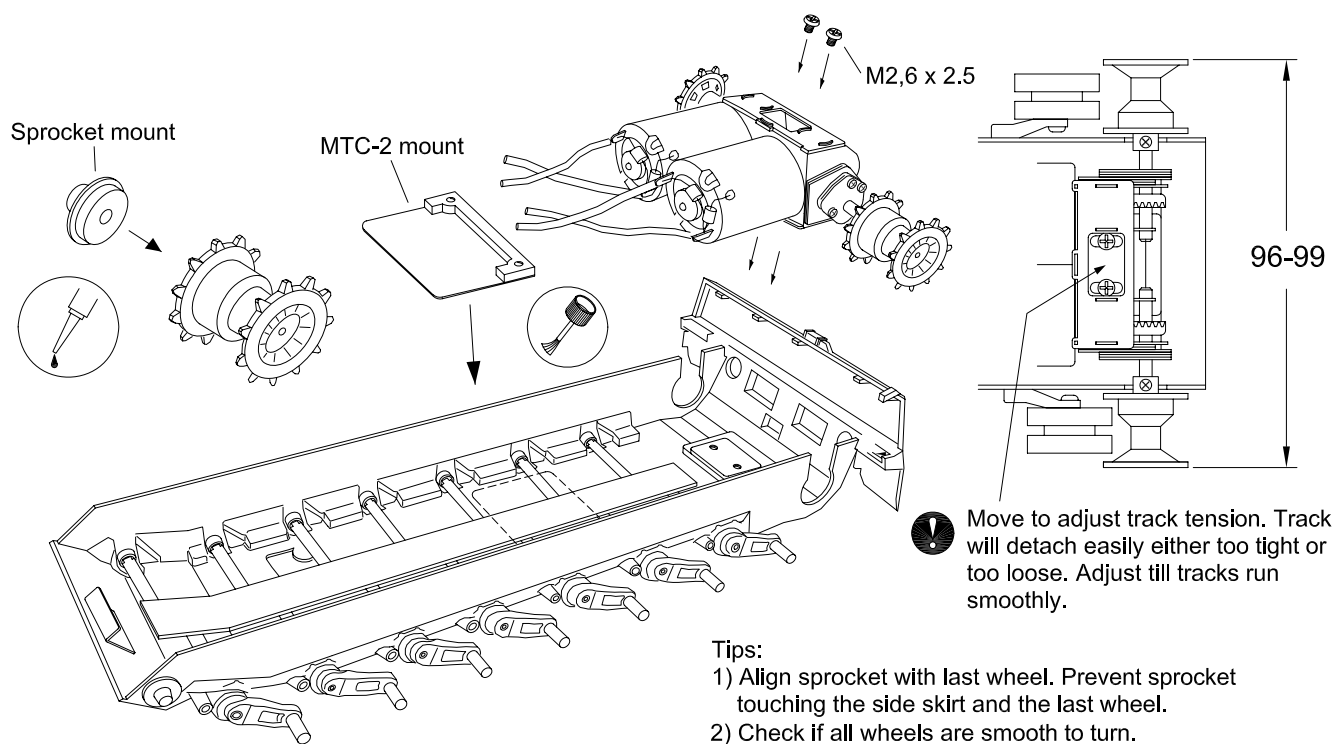
press fit to gun barrel here
do not apply cement



adjust recoil travel if necessary



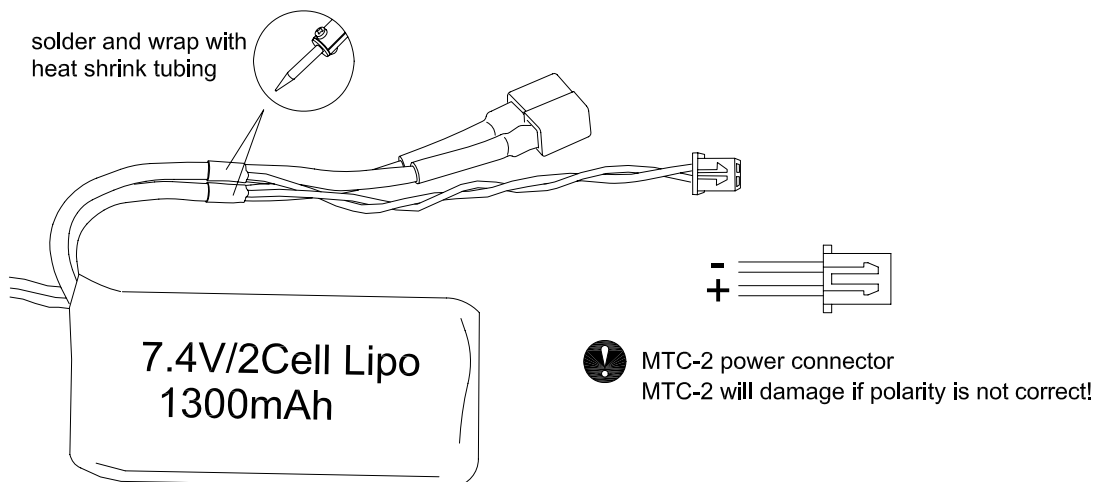
15 Motor and sprocket



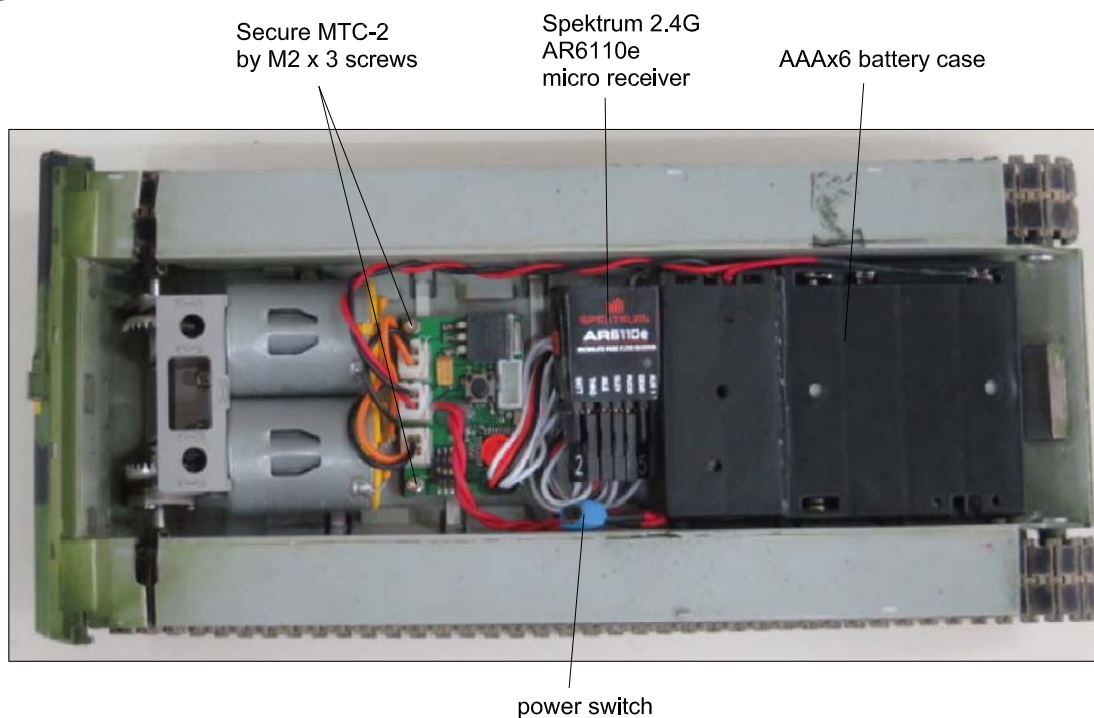
16 Using Lipo battery (optional)

! Lipo battery can be dangerous if not use properly! Follow all safety precautions and always use a dedicated Lipo charger.

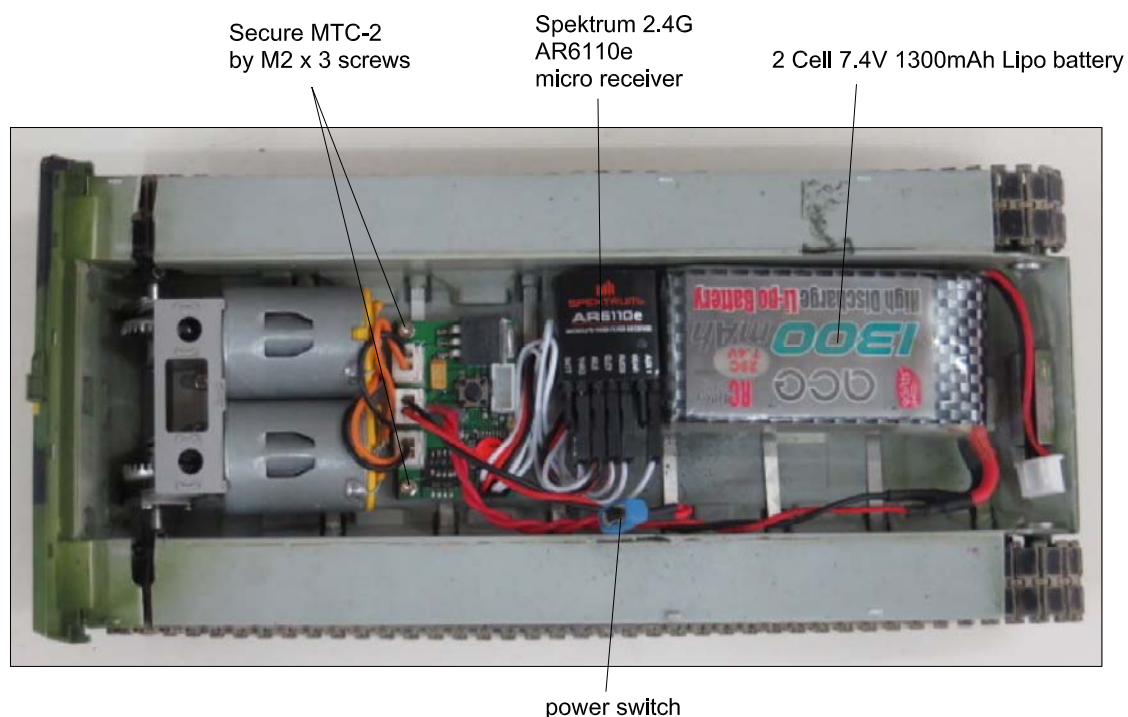
- 1) Use 7.4V/2Cell Lipo battery (800-1500mAh)
- 2) Make sure battery is small enough to put inside the lower hull.
- 3) Solder connector for MTC-2 as shown. Keep original connector for charging.



17 Lower hull connections



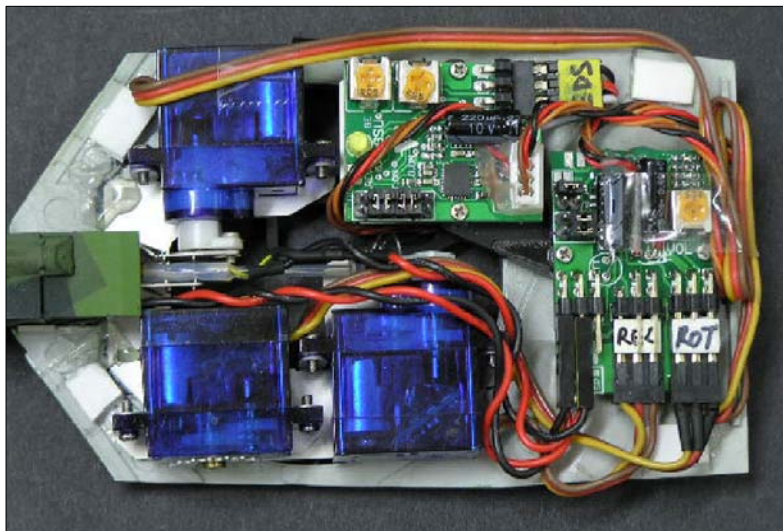
Using 6 cell AAA NiMH battery



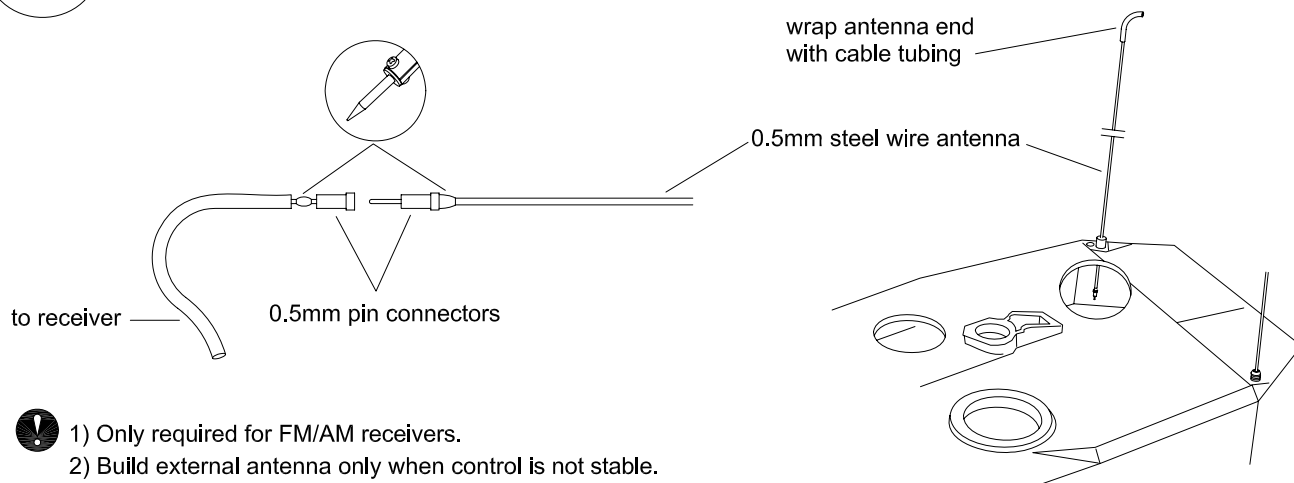
Using 2 Cell 7.4V Lipo battery

18 Turret connections

- ❗ 1) Connect servos, speaker and LEDs according to ACU and GSU manual.
- 2) Tie up cables neatly and away from moving parts.



19 Antenna (for FM/AM receivers)



- ❗ 1) Only required for FM/AM receivers.
- 2) Build external antenna only when control is not stable.
- 3) Construct antenna connector as shown.
- 4) To avoid interference, keep antenna cable away from motor cables.